



# Lisle-Woodridge Fire Protection District Monthly Operational Report

April 2019

## Training Highlights:

Wellness/Fitness Training  
 NFPA 1410 Drills  
 CART – Confine Space  
 MABAS 16 – Burn Tower  
 Evolutions  
 Ladder Evolutions

## EMS Highlights:

CE – Adult Behavioral  
 Emergencies & Special  
 populations  
 Quarterly Intubations  
 CPR – Woodridge PD

## Total Department Training

Hours: 3,917

## Fire Prevention Highlights:

Primary Inspections – 63  
 Re-Inspections – 65  
 System Verification – 87  
 Follow-up – 254

## Public Ed Highlights:

Ride to School  
 Annual Easter Egg Hunt  
 Fire Drills

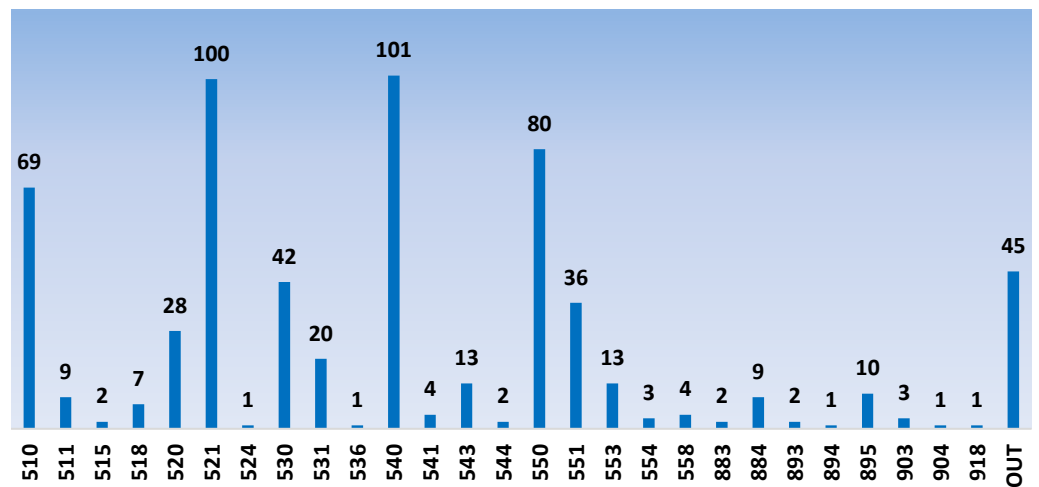
## Operational Highlights:

Injuries – 1  
 Accidents – 0  
 WC – 0  
 Self-Sick – 24  
 Out of Rank Hours – 1,272  
 Overtime Hours - 276

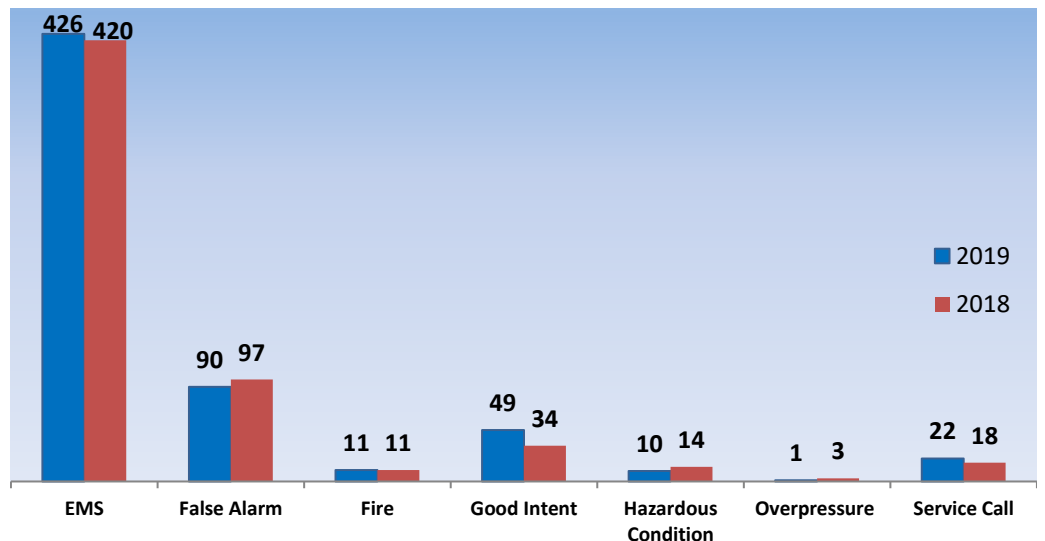
## Monthly Summary

The Lisle-Woodridge Fire District responded to 609 incidents this month. Total incidents year-to-date is 2,489. 426 (70%) of the monthly total were requests for Emergency Medical Services and the remaining 185 (30%) were Fire/Rescue related. We responded Mutual Aid/Auto Aid 45 times and received Mutual Aid/Auto Aid 51 times.

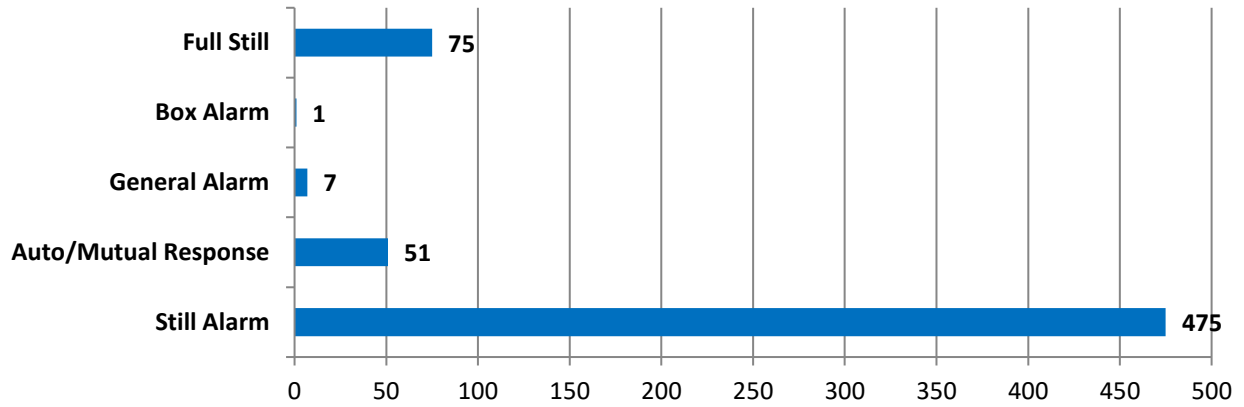
### INCIDENT BY DISTRICT



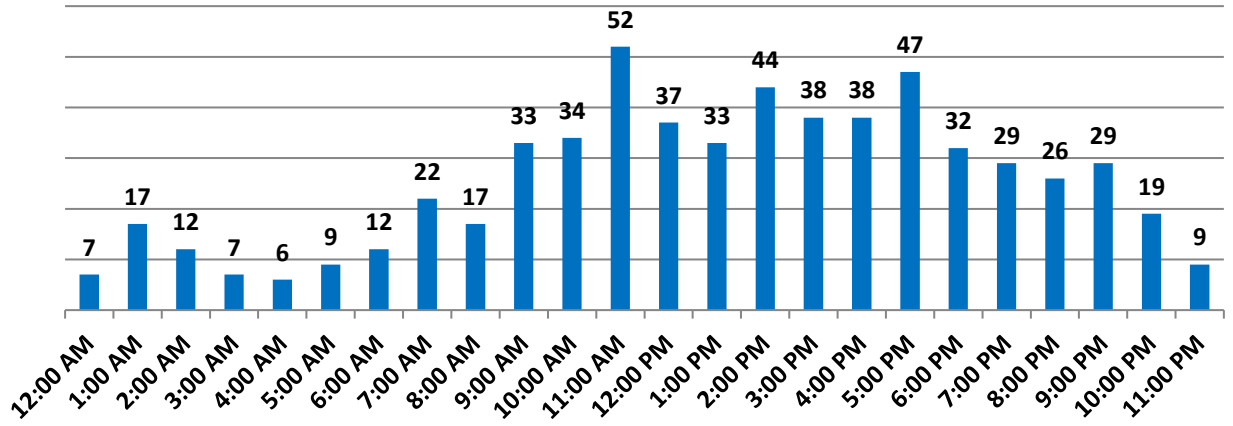
### INCIDENT TYPE



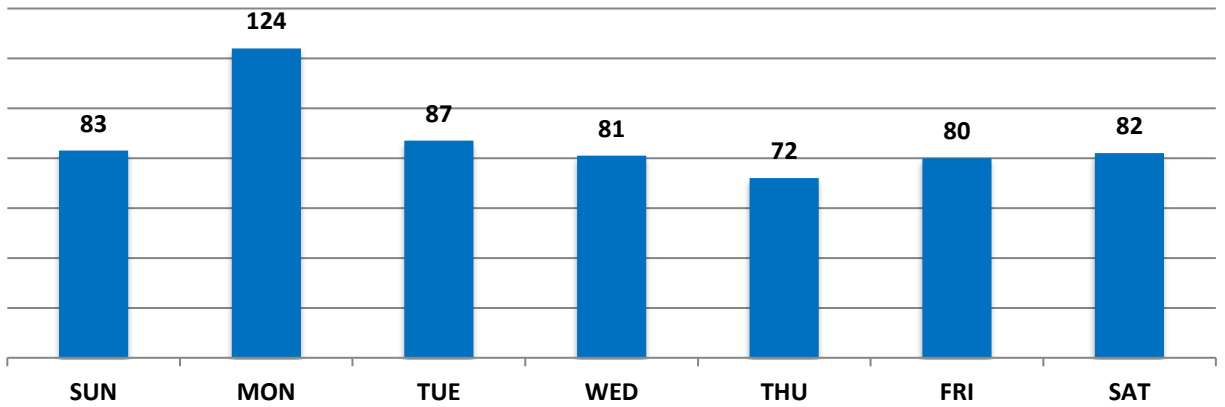
## TYPE OF ALARM



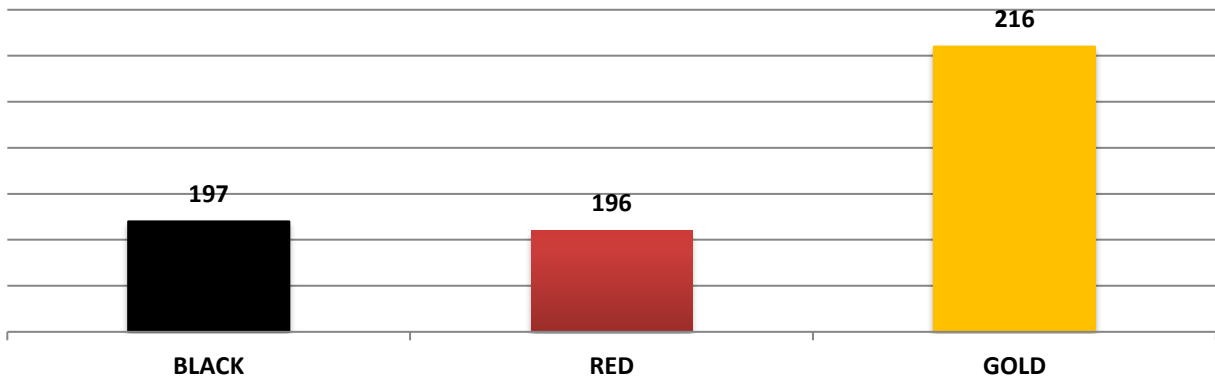
## NUMBER OF CALLS PER HOUR



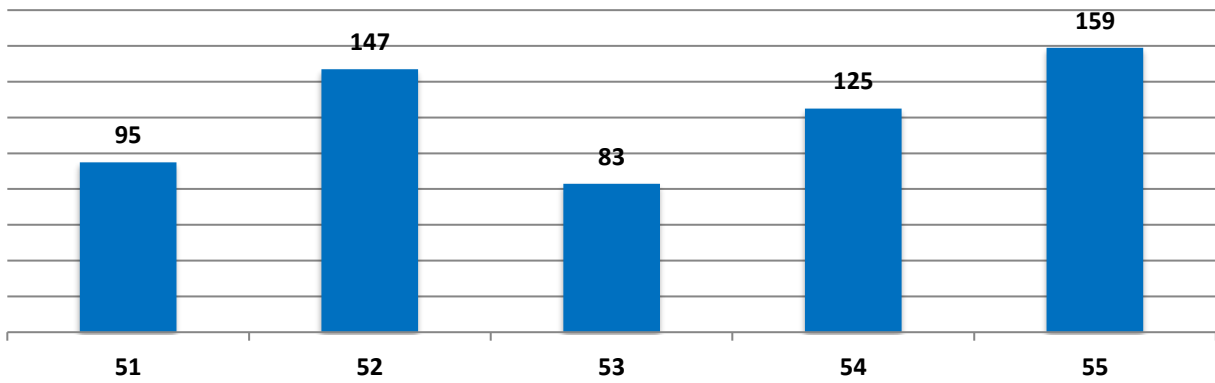
## INCIDENTS BY DAY OF WEEK



## INCIDENTS BY SHIFT



## INCIDENTS BY STATION



## NUMBER OF VEHICLE RESPONSES

