



Lisle-Woodridge Fire Protection District Monthly Operational Report

March 2019

Monthly Summary

Training Highlights:

Wellness/Fitness Training
 Forcible Entry
 MABAS 16 – Haz Mat
 Burn Tower Evolutions
 Large Area Search
 DECON Training

EMS Highlights:

CE – New SOP Review
 Quarterly Intubations
 IDPH Ambulance Inspection
 New Hire Training
 CPR – Glenbard South HS

Total Department Training Hours: 5,203

Fire Prevention Highlights:

Primary Inspections – 29
 Re-Inspections – 51
 System Verification – 321
 Follow-up - 223

Public Ed Highlights:

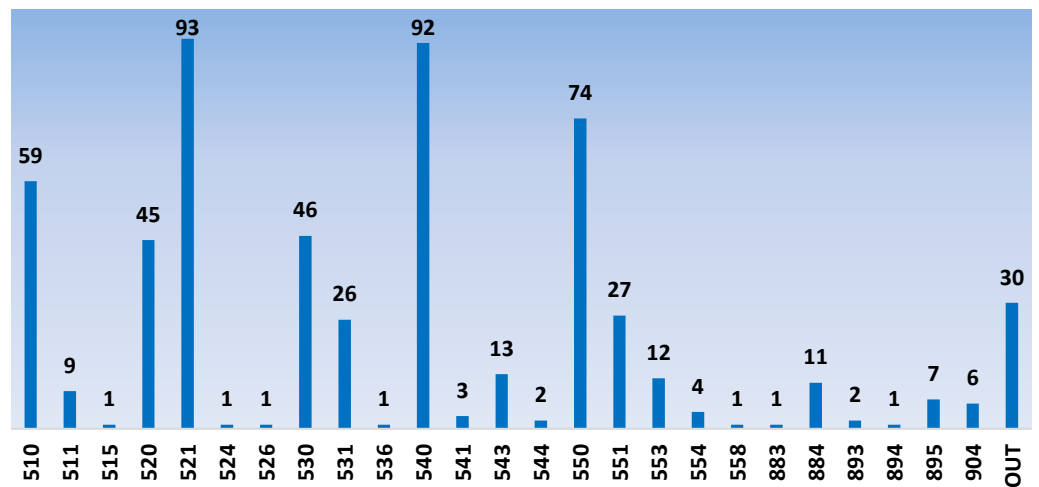
Station Tours
 Safety Talk
 Facebook Views - 450

Operational Highlights:

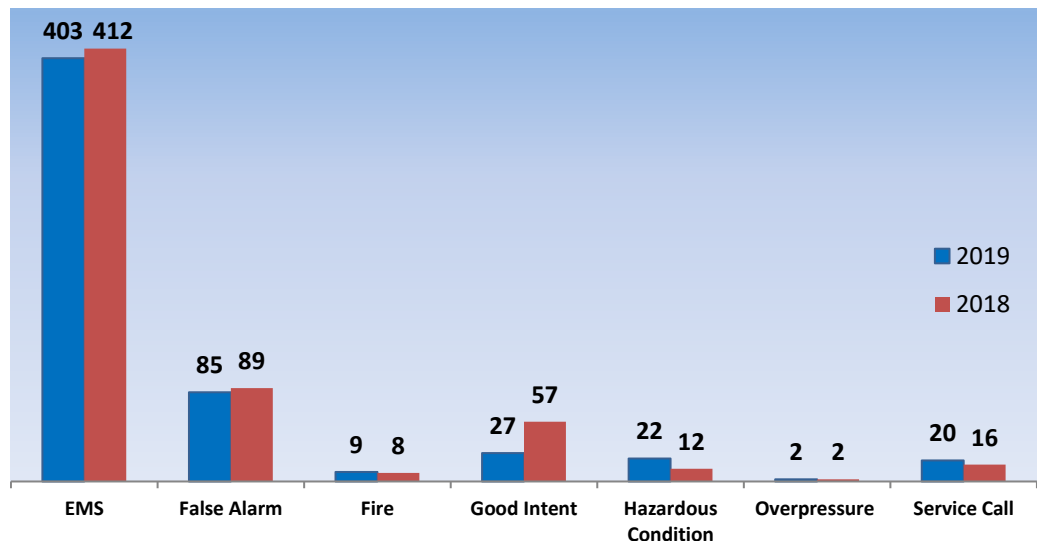
Injuries – 2
 Accidents – 0
 WC – 0
 Self-Sick – 19.5
 Out of Rank Hours – 1,902
 Overtime Hours - 552

The Lisle-Woodridge Fire District responded to 568 incidents this month. Total incidents year-to-date is 2,448. 403 (71%) of the monthly total were requests for Emergency Medical Services and the remaining 165 (29%) were Fire/Rescue related. We responded Mutual Aid/Auto Aid 54 times and received Mutual Aid/Auto Aid 58 times.

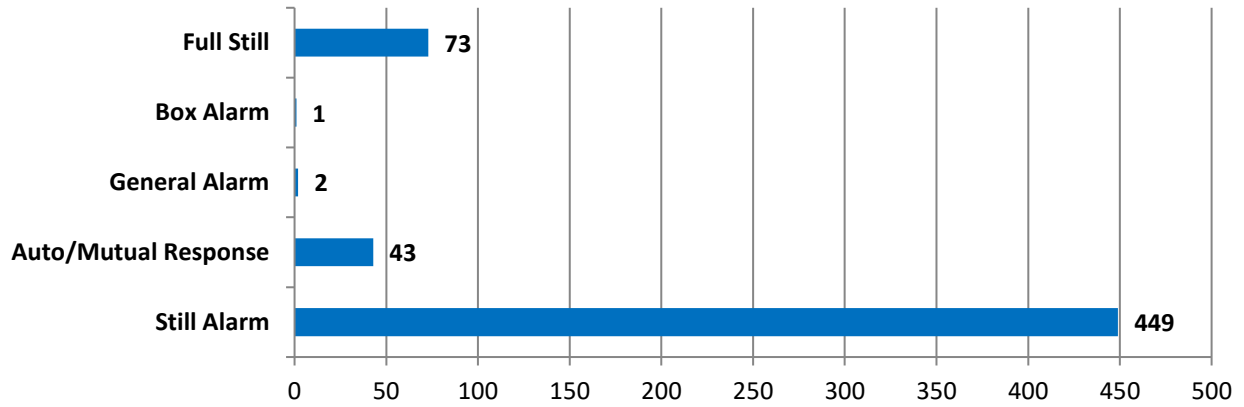
INCIDENT BY DISTRICT



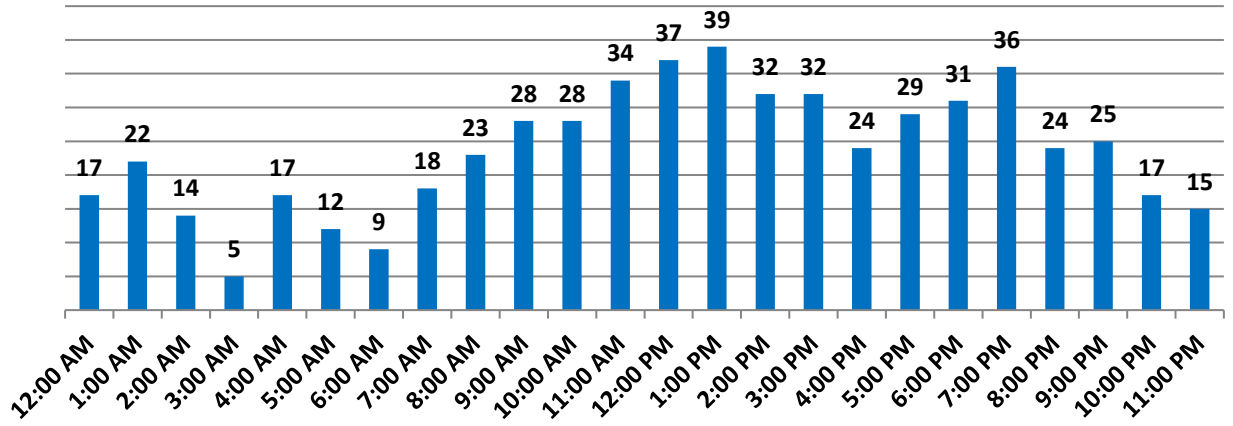
INCIDENT TYPE



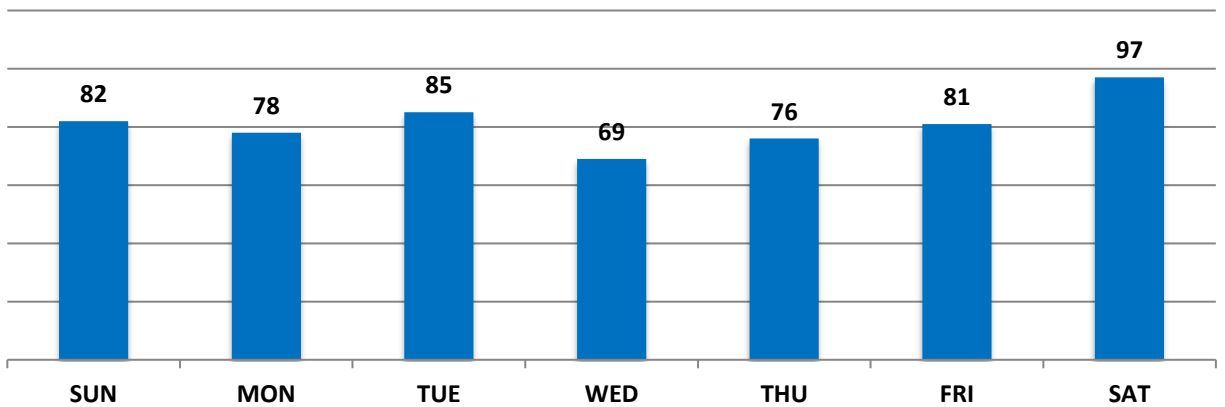
TYPE OF ALARM



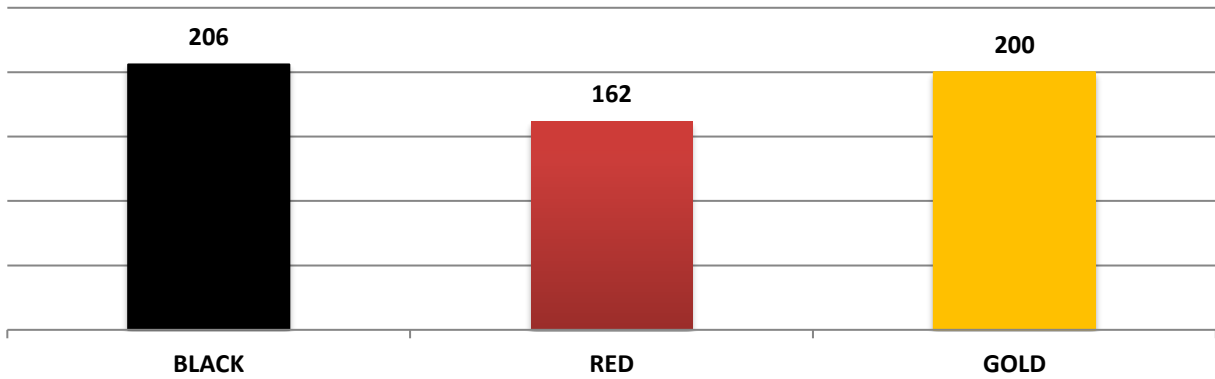
NUMBER OF CALLS PER HOUR



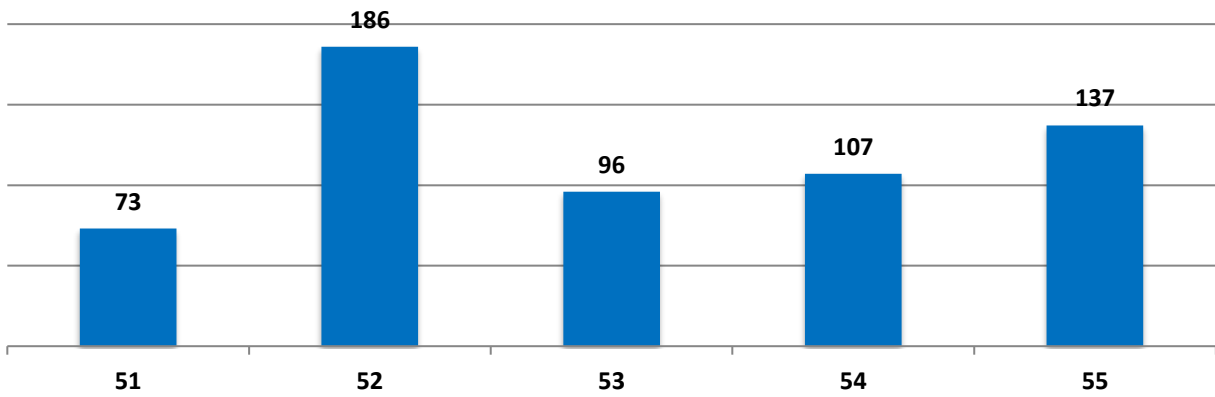
INCIDENTS BY DAY OF WEEK



INCIDENTS BY SHIFT



INCIDENTS BY STATION



NUMBER OF VEHICLE RESPONSES

