



Lisle-Woodridge Fire Protection District Monthly Operational Report

February 2019

Monthly Summary

Training Highlights:

Wellness/Fitness Training
Ice Rescue
MABAS 16 – Dive Drill
EAP In-service
New Hire Training

EMS Highlights:

CE – Respiratory
SOP Review
Quarterly Intubations

Total Department Training

Hours: 4,245

Fire Prevention Highlights:

Department Annual
Refresher Training
Primary Inspections – 55
Re-Inspections – 47
System Verification – 258
Follow-up - 217

Public Ed Highlights:

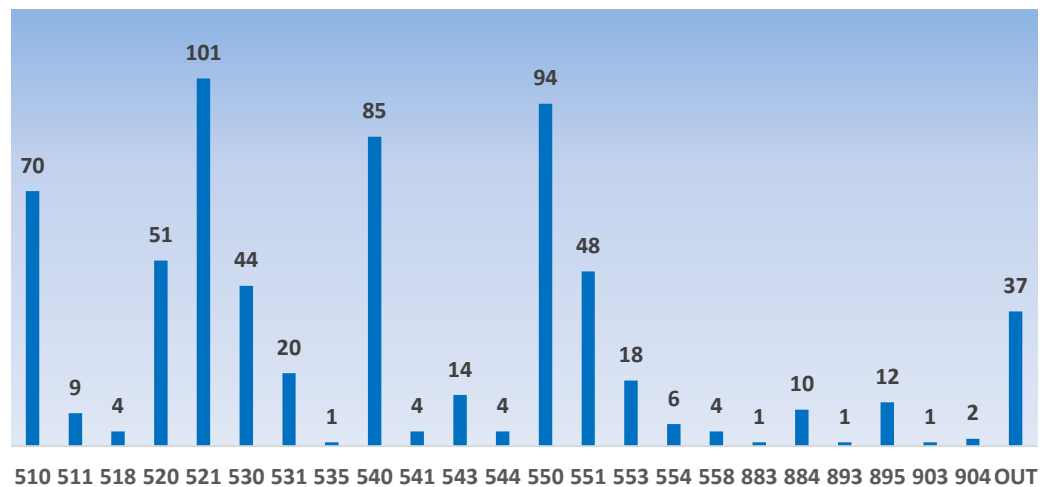
Station Tours
Safety Talk
Fun Fair
Facebook Views - 409

Operational Highlights:

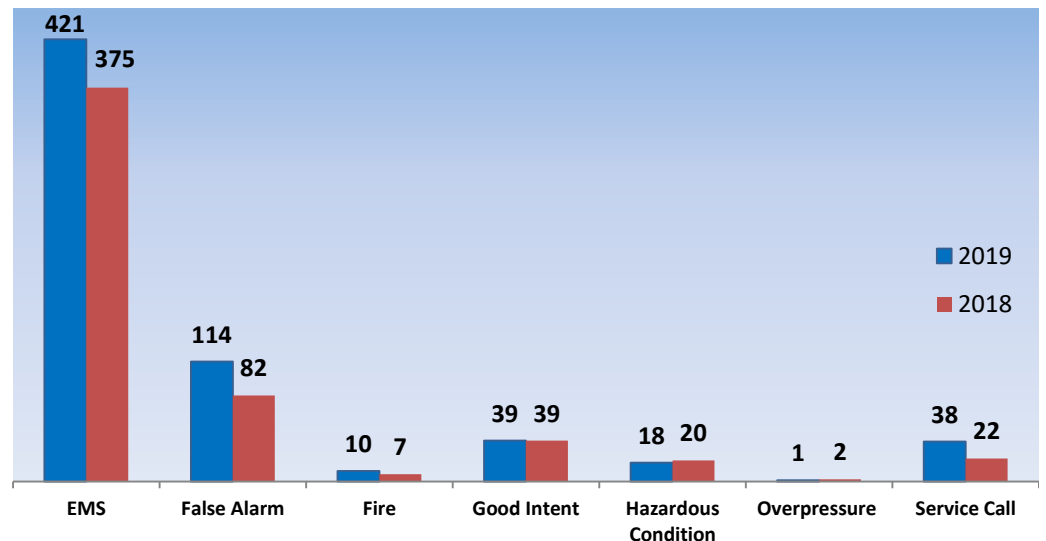
Injuries – 1
Accidents – 0
WC – 0
Self-Sick – 20
Out of Rank Hours – 1,464
Overtime Hours - 276

The Lisle-Woodridge Fire District responded to 641 incidents this month. Total incidents year-to-date is 1,284. 421 (66%) of the monthly total were requests for Emergency Medical Services and the remaining 220 (34%) were Fire/Rescue related. We responded Mutual Aid/Auto Aid 63 times and received Mutual Aid/Auto Aid 52 times.

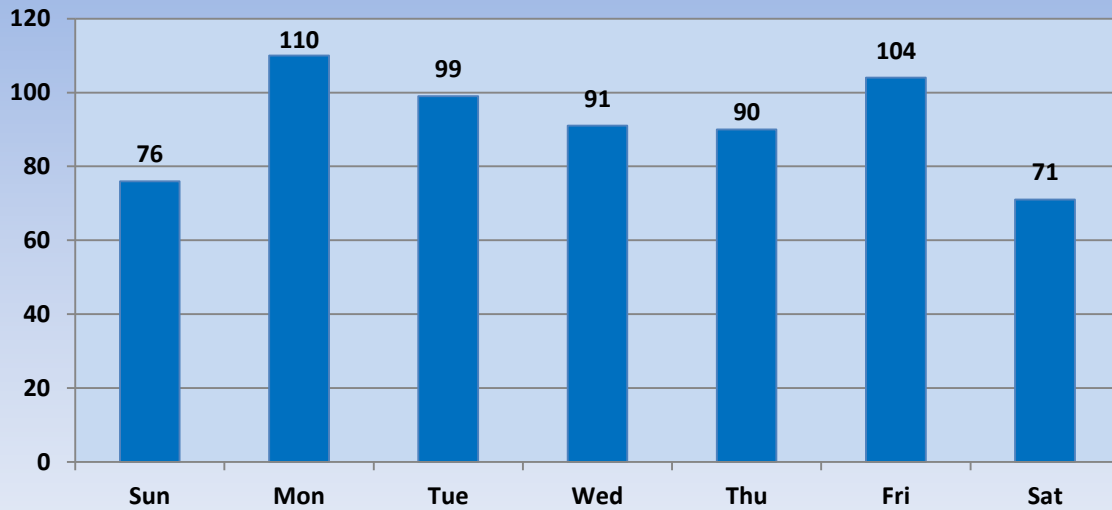
INCIDENT BY DISTRICT



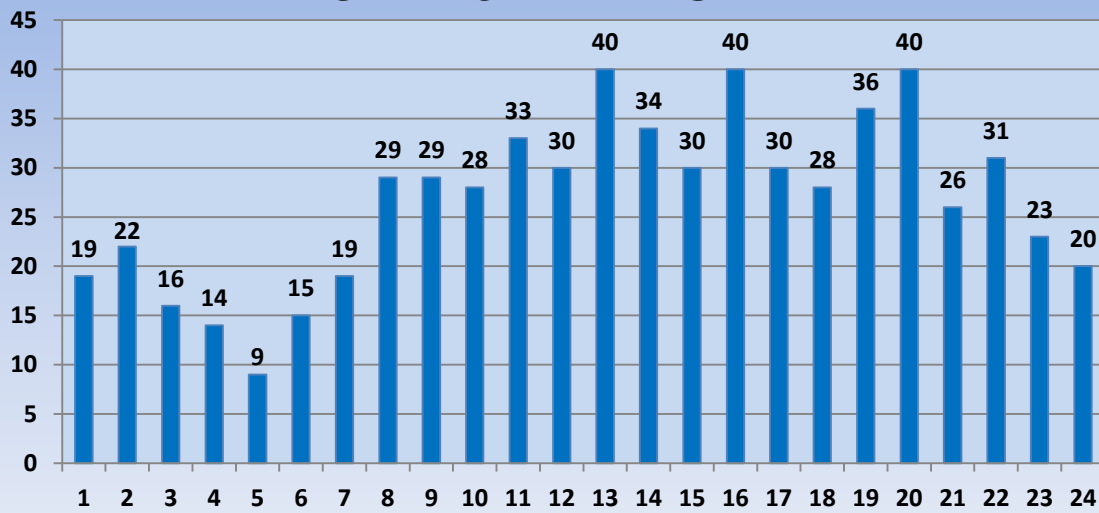
INCIDENT TYPE



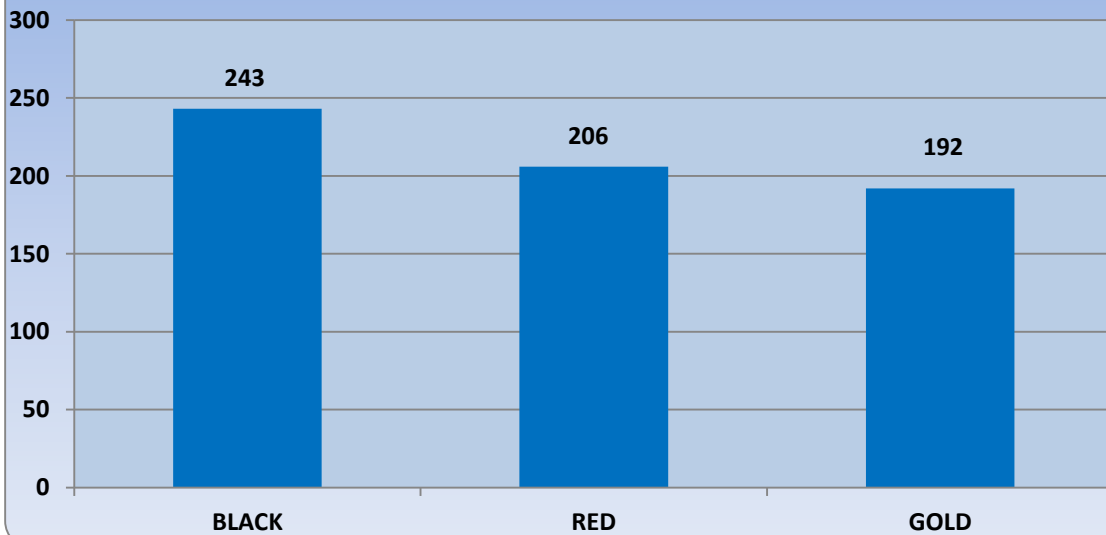
INCIDENTS BY DAY OF WEEK



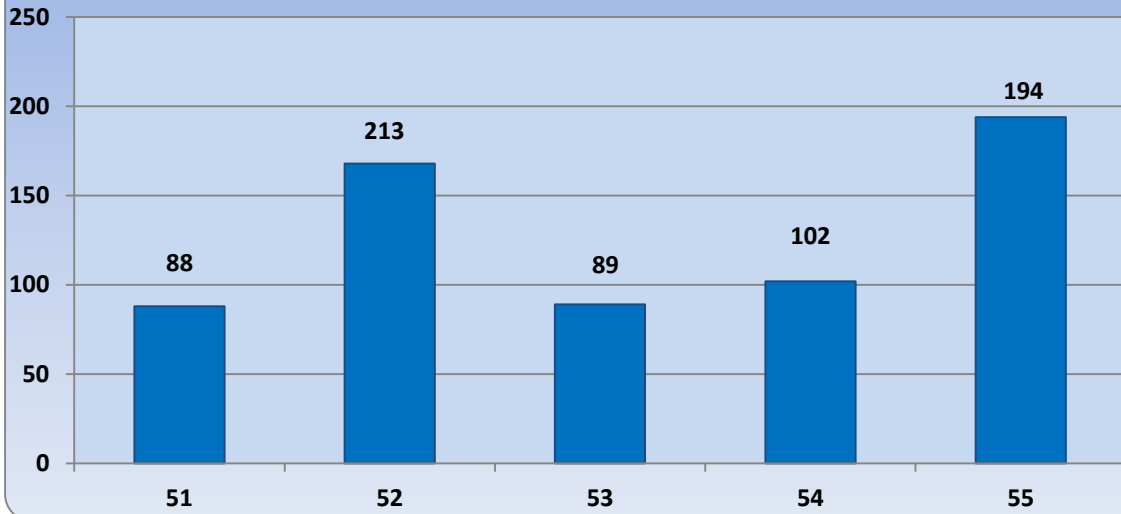
INCIDENTS BY TIME OF DAY



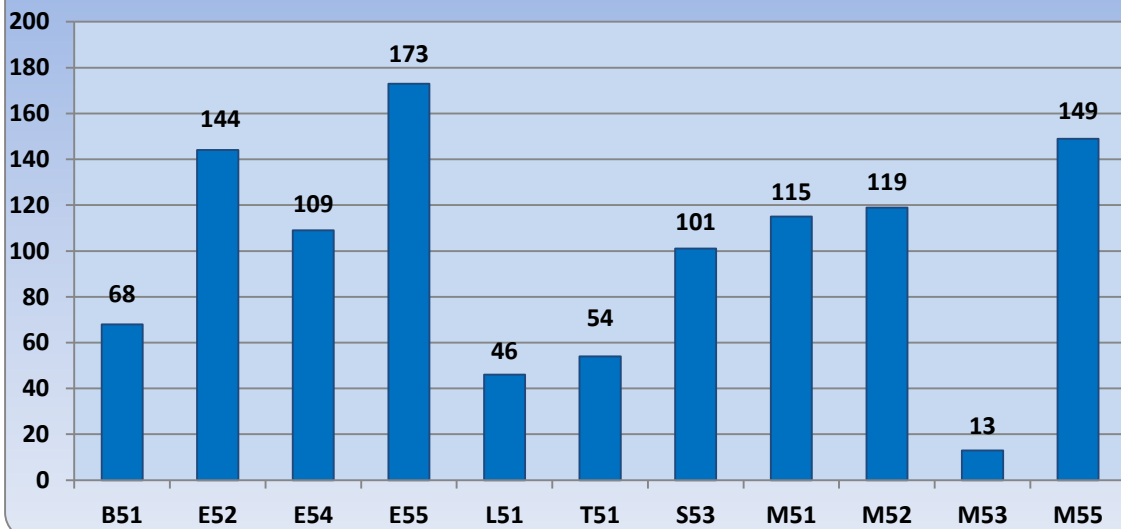
INCIDENTS BY SHIFT



INCIDENTS BY STATION



INCIDENTS PER VEHICLE



INCIDENTS BY ALARM TYPE

