



Lisle-Woodridge Fire Protection District Monthly Operational Report

December 2018

Training Highlights:

Wellness/Fitness Training
FAE/Cold Weather Ops
MABAS 16 – HazMat
Gear Inspections

EMS Highlights:

CE – Make-up
Quarterly Intubations
Football Standby

Total Department Training

Hours: 3,712

Fire Prevention Highlights:

Primary Inspections – 110
Re-Inspections – 91
System Verification - 265

Public Ed Highlights:

Station Tours
Santa Lights Parade

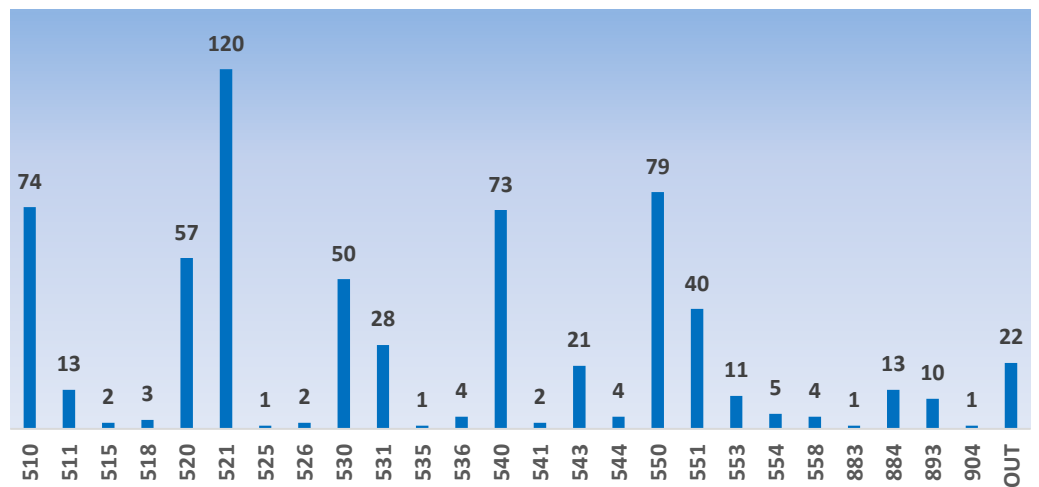
Operational Highlights:

Injuries – 0
Accidents – 2
WC – 0
Self-Sick – 17
Out of Rank Hours – 1,554
Overtime Hours - 411

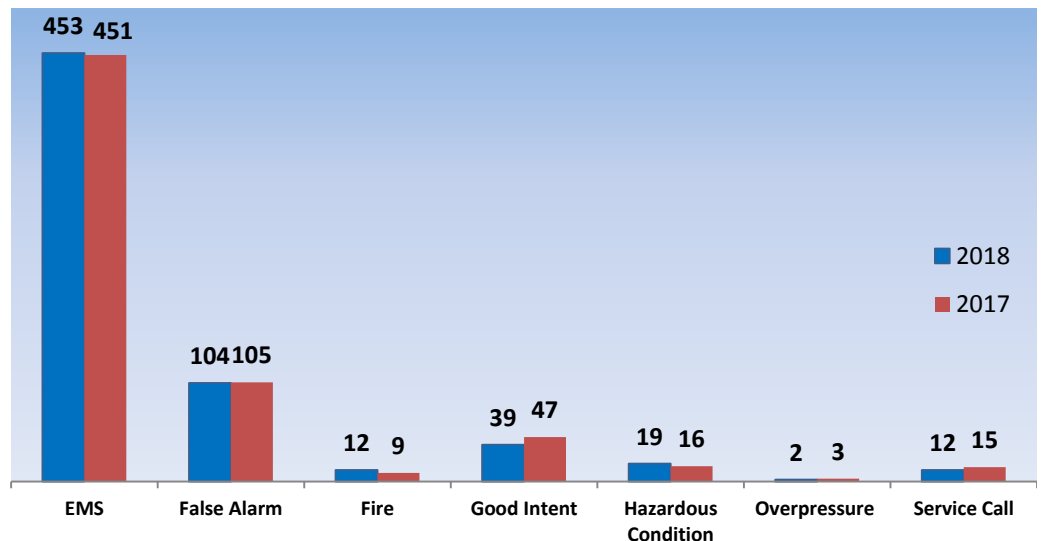
Monthly Summary

The Lisle-Woodridge Fire District responded to 641 incidents this month. Total incidents year-to-date is 7,655. 453 (71%) of the monthly total were requests for Emergency Medical Services and the remaining 189 (29%) were Fire/Rescue related. We responded Mutual Aid/Auto Aid 47 times and received Mutual Aid/Auto Aid 61 times.

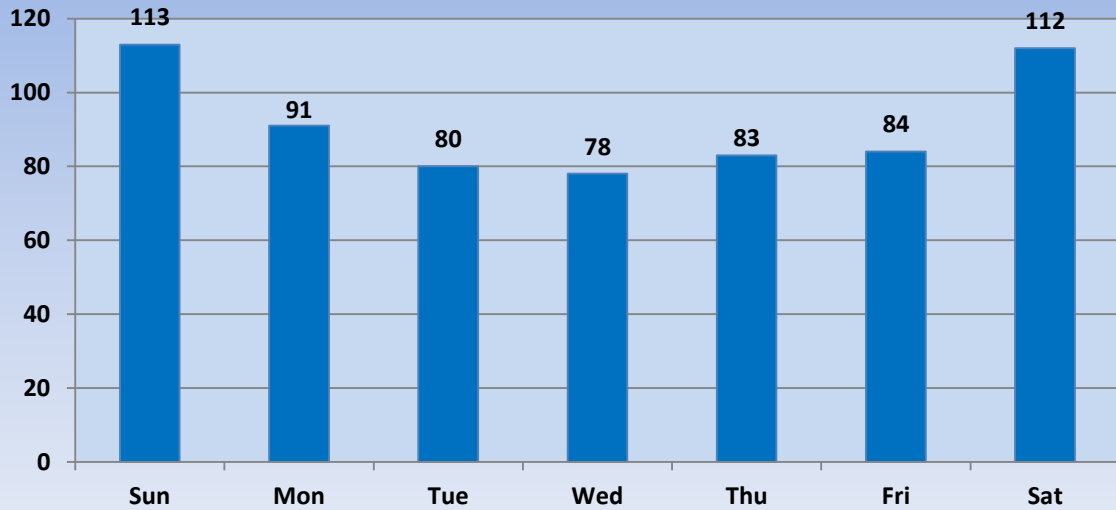
INCIDENT BY DISTRICT



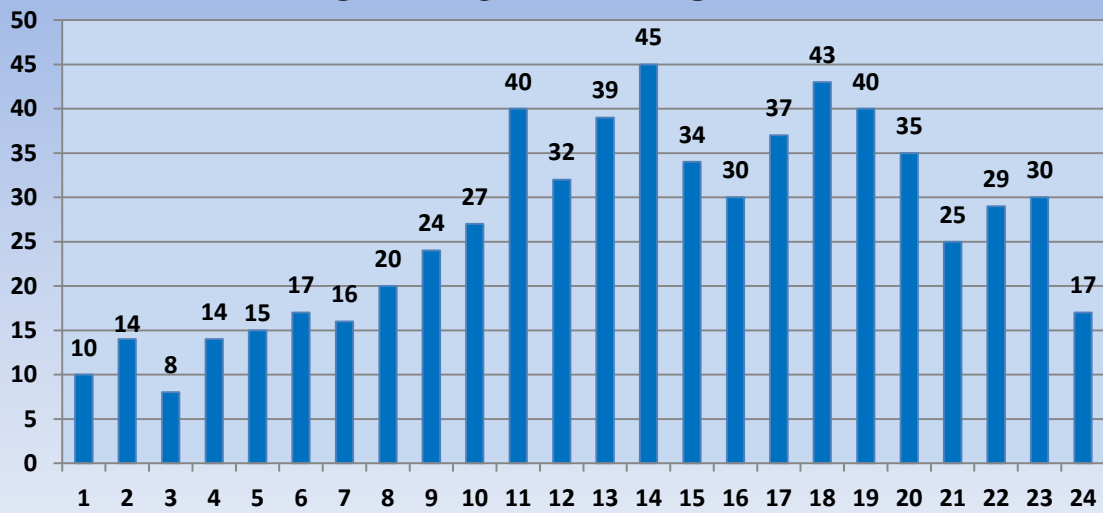
INCIDENT TYPE



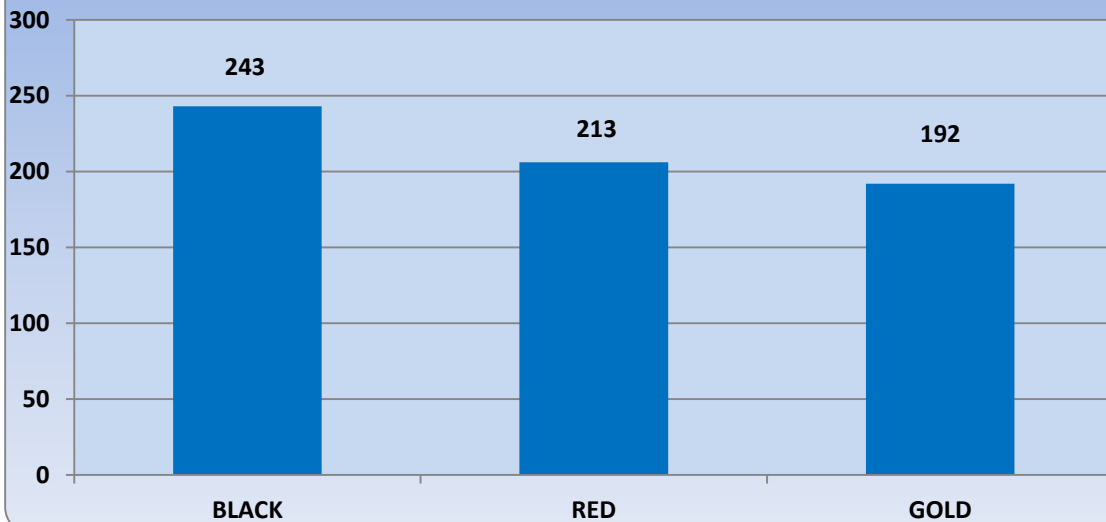
INCIDENTS BY DAY OF WEEK



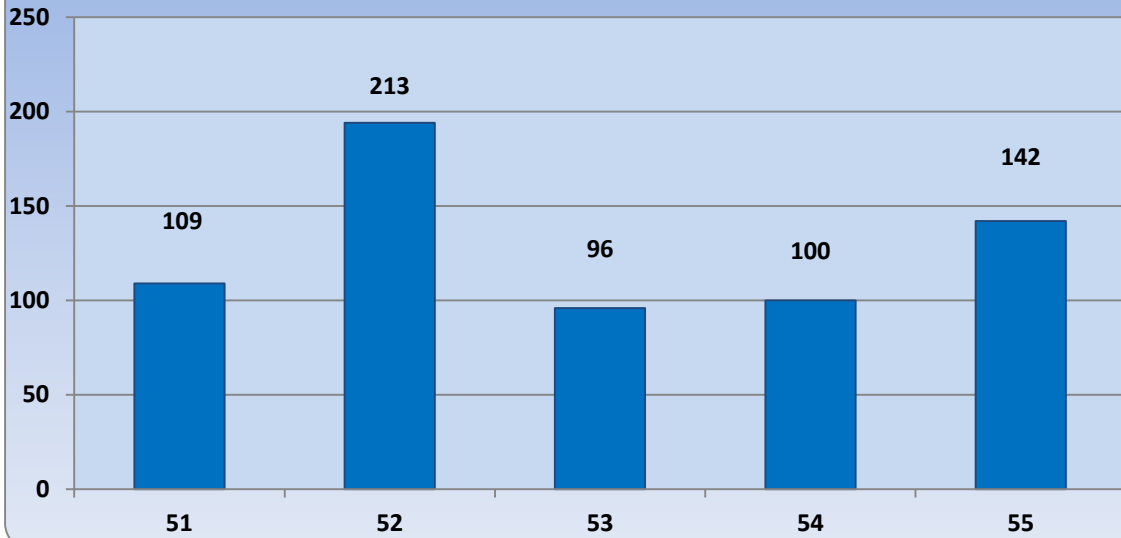
INCIDENTS BY TIME OF DAY



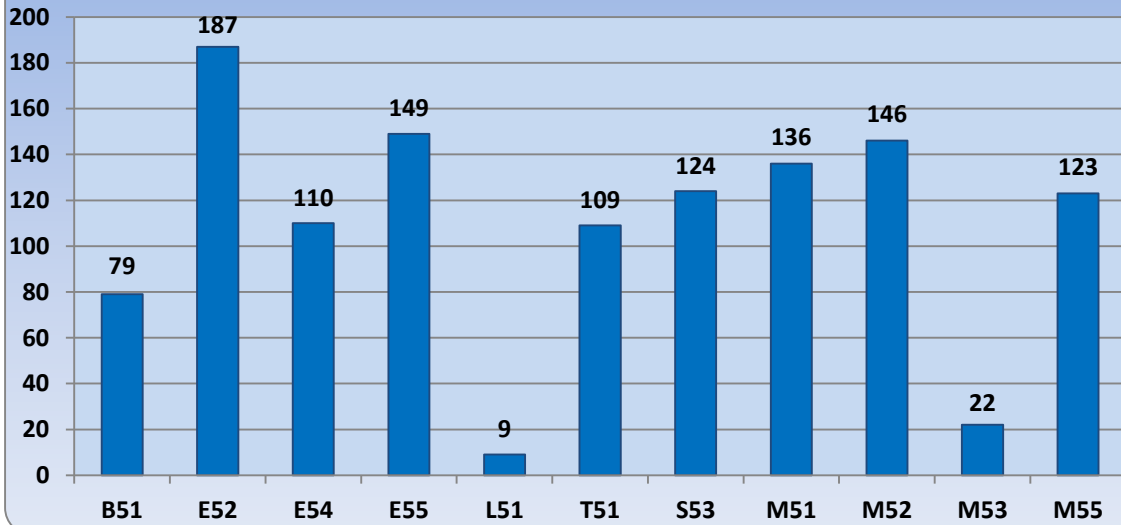
INCIDENTS BY SHIFT



INCIDENTS BY STATION



INCIDENTS PER VEHICLE



INCIDENTS BY ALARM TYPE

