

Table of Contents

The President of the Board

A Message from the Chairman

From the Chief's Desk

The District

- Abstract
- Call Volume
- Types and Trends
- Stations
- Cost of Service

The Personnel

- Organizational Chart
- Personnel by Shift
- Hirings, Promotions and Retirements
- 2008 9/11 Remembrance Ceremony

The Shifts

- Black
- Red
- Gold

The Divisions

- Fire Prevention Bureau
- Training and Safety
- Management Information Systems
- Grant Acquisitions
- Finance
- Underwater Rescue and recovery
- Vehicle Maintenance
- Honor Guard
- Wellness
- Technical Rescue

From the Chiefs Desk

As the Fire Chief / Administrator, I am pleased to present the 2008 Annual Activities Report.

All of us at the Lisle Woodridge Fire District, on behalf of the Board of Trustees and the Board of Fire Commissioners, want to thank all who read this document for their continued support of our mission. Our charge is to provide the highest skilled response in a time of need. We are ever challenged with the task of improving upon the fire, Emergency Medical Service and Specialized Rescue that we provide.

2008 was another good year as we witnessed a decrease in all fire related calls. Requests for Emergency Medical Service / Advanced Life Support, however, continued to increase as it has over previous years.

This report chronicles the events of the past year. Our continued promise to our residents and those we serve as a professional, well-prepared Emergency Services Provider, made possible through the selfless commitment of the nation's greatest firefighters. I am proud of our accomplishments, and prouder still of our people as we strive to make your District a better and safer place to live, work and recreate.

On behalf of our Officers, firefighters and Administrative Staff, thank you for the privilege of Serving.

Thomas K. Freeman
Fire Chief / Administrator

ZACHARY H. LAWRENCE PRESIDENT, BOARD OF TRUSTEES

On behalf of the entire Board of Trustees, I'd like to take this opportunity to thank you for taking the time to review this year's Annual Report of the Lisle-Woodridge Fire District. It has been my great honor and pleasure to serve on the Board of Trustees for 17 years, the past seven (7) as its President.

2008 was another great year for the Lisle-Woodridge Fire Protection District. So much has been accomplished through the dedication of our personnel. As they continue to strive to provide the best service to our residents, my sincere thanks goes to the men and women of the Lisle-Woodridge Fire District for an outstanding performance again this past year. We, the Board of Trustees, as policy makers of the district, will continue to explore creative alternatives so as to increase efficiency while operating within our fiscal constraints.

DENNIS CALLAN, CHAIRMAN BOARD OF FIRE COMMISSIONERS

As Chairman of the Board of Fire Commissioners for the past 18 years I've had the pleasure of meeting all potential candidates for promotion and can attest first hand to the caliber of the men and women who ultimately "make the grade". On behalf of Commissioners Max Armstrong and Jack Kelly, I would like to thank all the members of the Lisle-Woodridge Fire District for their continued effort and commitment toward excellence. They truly are the finest and most dedicated firefighters in the nation.

Abstract

Lisle Woodridge Fire District - 2008

The LWFD responded to 142 fires in 2008. These fires resulted in 0 (zero) civilian fatalities, 18 civilian casualties and \$2,504,600 of associated fire loss (or 95.56% property value saved). Of the 18 civilian casualties, two were severe, one was moderate and the rest were minor or undetermined. Fires accounted for 2.2% of the total volume of calls for the district, 22.5% of incidents were false alarms and 61% were EMS calls for assistance. Total fire loss compared to property value in the district as a whole was .000363%.

Fire Activity

LWFD companies responded to 38 structure fires (including chimney and outbuilding fires), 38 vehicle fires and 303 automatic aid / mutual aid requests from other departments in 2008.

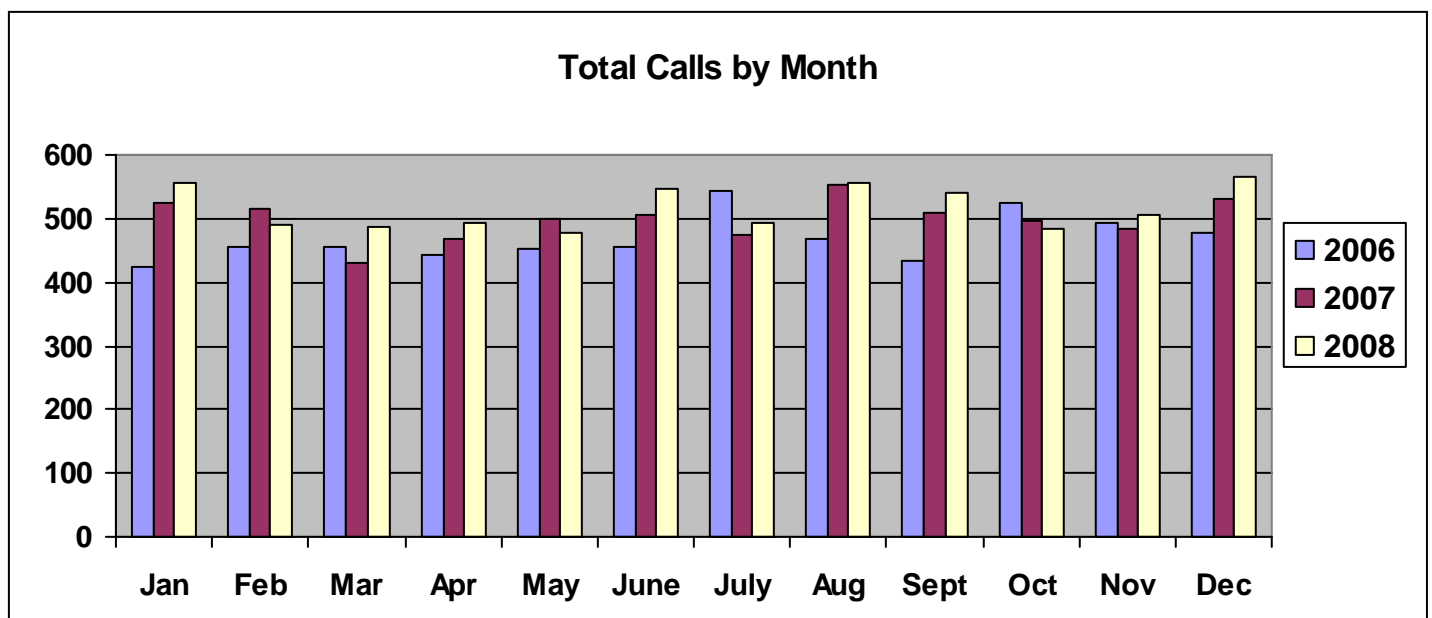
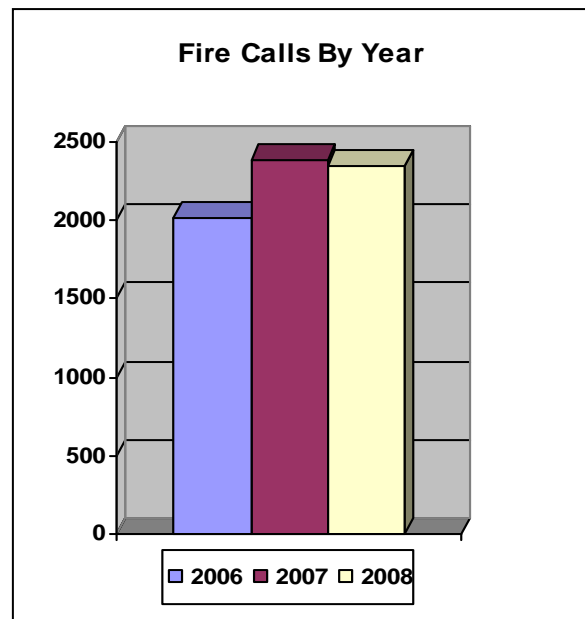
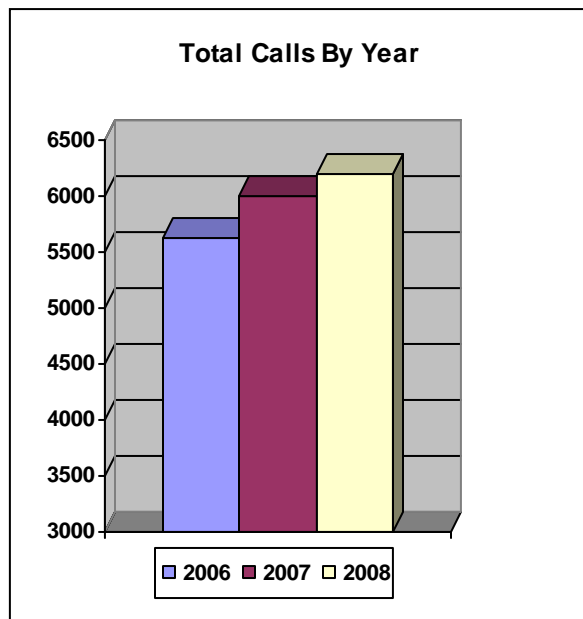
EMS Activity

The Emergency medical Services division responded to over 4,000 calls for assistance in 2008, and processed over 3,000 claims for EMS billing. The division successfully implemented the "RescueNet Tablet PCR" (an electronic patient care reporting system) to make reporting both faster and more efficient. EMS instructed over 900 Junior High students with the FRIEND first aid curriculum. CPR continues to be offered through the Community Training Center at the headquarters station. The district also provided multiple ambulances, personnel and a first aid tent for the annual "Eyes to the Skies" festival.

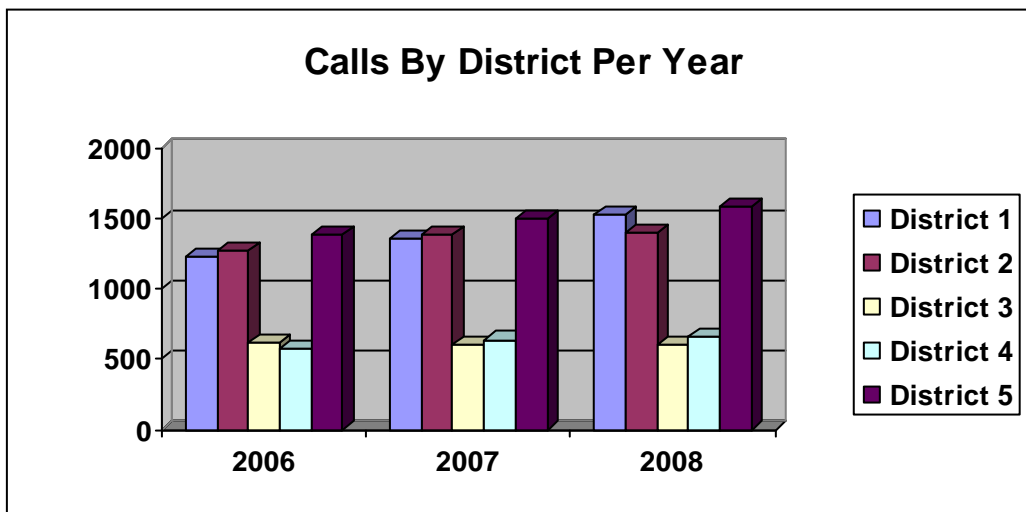
- The Lisle Woodridge Fire District is the first fire district in the nation to boast an "ISO 1" insurance rating from the Insurance Services Office, whose resources are used nationwide to establish insurance rates.
- National average of Firefighters per 1000 people protected (for a comparable department) is 1.51. The LWFD is at the norm providing 1.5 firefighters per 1000 population.
- The cost per LWFD resident for their firefighters is about \$214.00 per year.
- LWFD minimum staffing includes paramedics providing Advanced Life Support (ALS) on every ambulance and five of six fire suppression vehicles, 24 hours a day. All vehicles provide ALS service when staffing allows.
- The LWFD Finance Department has received the "Certificate of Achievement for Financial Excellence in Reporting" for 16 consecutive years through 2007 and anticipates yet another for 2008.

Total calls for service within the district are still increasing; however fire calls are leveling or even going down. Emergency medical calls are making up the difference, and are up significantly with no expectation of a slowdown. This can be partially attributed to a national trend of increasing demand based on longer life expectancies.

In 1900, life expectancy was only 47 years. In 1950 it had jumped to 68. And in 2000, the average life expectancy for both males and females was over 77 years. This trend continues today. In fact, Emergency Medical Service (EMS) calls now account for over 65% of the District's calls. As you can see, calls have increased yearly over the past three years. **The LWFD had more calls for assistance in 2008 than at any time in our 65 year history.**



Calls By District Per Year



The locations of the District's facilities are a direct response to the shape and size of the area protected and the time it takes to reach our customers. There is a direct correlation between the time it takes our services to reach someone's home and the probability of a successful result.

Vehicles from the LWFD as well as other jurisdictions respond to calls for help. An example of a typical response (Box) card showing vehicles due for a fire call:

DEPARTMENT NAME: LISLE-WOODRIDGE	BOX ALARM TYPE: FIRE BOX	EFFECTIVE DATE: MARCH 2009	MABAS DIVISION: 16
BOX ALARM #: 1	LOCATION OR AREA: GRID 9-11, 14-26, 28	AUTHORIZED SIGNATURE: FIRE CHIEF TOM FREEMAN	

L O C A L

ALARM LEVEL	ENGINES	TRUCKS	SQUADS	MEDICS	CHIEFS	SAFETY	OTHER	CHANGE OF QUARTERS (STA #)
STILL	511							
FULL STILL	511, 551	517		510	LWDB EC			
GENERAL	511, 551, 541, DGRV	517, 537	DGRVSQ 2	510, 530	LWDB EC LWDB DUTY CHIEF	506		WEAT ENG (1), 521 (2) LOMB TRK (1), 530 (1), 530 (2)
SPECIAL								

(*) Indicates Call Back Personnel, DO NOT Auto Replace these pieces of Equipment.

(**) Check with Incident Command

M A B A S

ALARM LEVEL	ENGINES	TRUCKS	SQUADS	MEDICS	CHIEFS	SAFETY	OTHER	CHANGE OF QUARTERS (STA #)
BOX	521, WEAT NAPR, DAWD	LOMB, NAPR	*515*	530	Div 16 IMAT LWDB CHIEFS	DGRVBC 5	DOEM MOC 1* 518, 519	GLYN ENG (1), BULB ENG (2) OKBK TRK (1) 520 (1), LEMT AMB (2)
2 ND	GLYN, BOLE, WARRN, HINS	OKBK, CRST	YRKC	520	LOMB	NAPR CAR 5 *See note*		WFLD ENG (1), LOCK ENG (2) AURA TRK (1), WEAT AMB (1)
3 RD	WFLD, LOCK, OBTR, GSDE	AURA, TRIS		WEAT	WEAT		MABAS Air 16	WLPK ENG (1), WSTM ENG (2) BLMD TRK (1), LOMB AMB (1)
4 TH	WLPK, WSTM, ROME, AURA	BLMD, WSTM			DAWD	WSTM		WEGO ENG (1), ARGH ENG (2) CLHL TRK (1)
5 TH	WEGO, ARGH, ADSN, HAPK	CLHL, PLWV						FERM ENG (1), ELMHENG (2) PLED TRK (1)

INTERDIVISIONAL OR TASK FORCE REQUEST	1 ST CHOICE	2 ND CHOICE	3 RD CHOICE
	Division 12	Division 10	Division 13

INFORMATION:

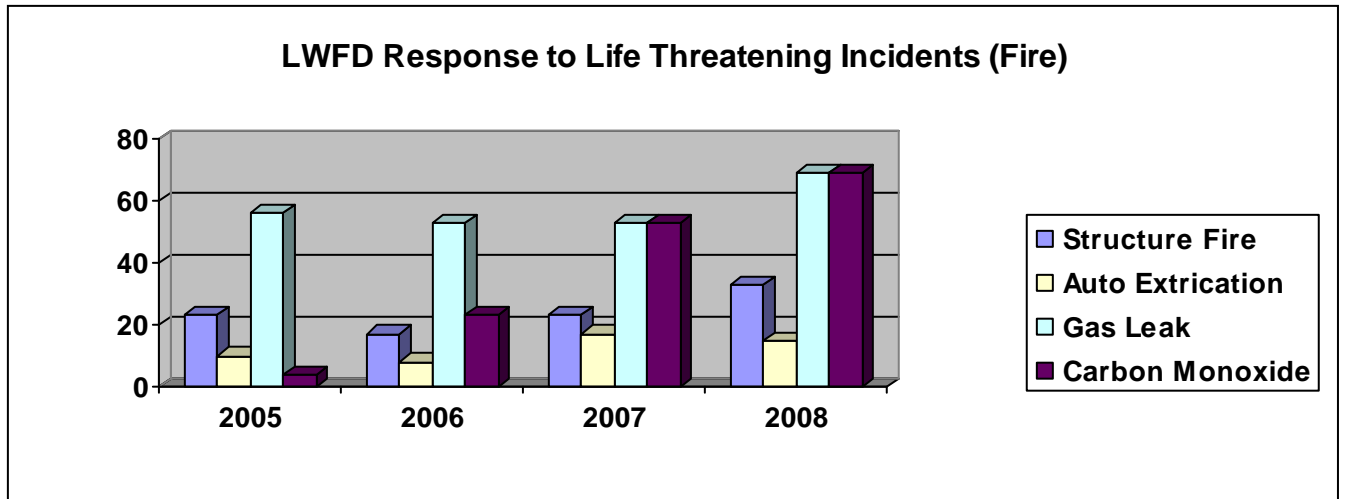
Change of Quarters (1) = 1005 SCHOOL ST (GRID 15) [Ogden to Main, South to School, East to Fire House]

Change of Quarters (2) = 7393 WOODRIDGE DR (GRID 37) [75th St to Woodridge Dr, North to Fire House]

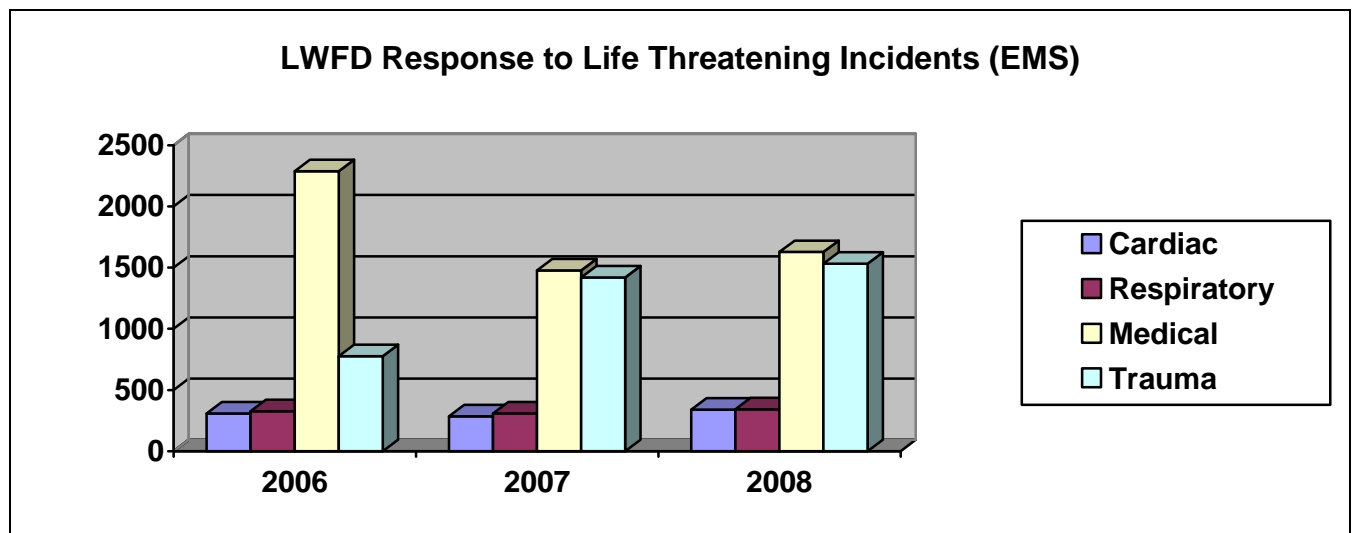
[***NOTE*** CHECK WITH COMMAND FOR SALVATION ARMY CANTEEN OR RED CROSS AT THE 2-11 LEVEL]

*=If DOEM MOC 1 unavailable, then WSTM 1888.

While there are many different types of life threatening incidents, four of the most severe and common are the structure fire, vehicle/auto extrication, gas leaks and carbon monoxide leaks. The chart below identifies how often the LWFD has responded to these types of incidents in the past four years.

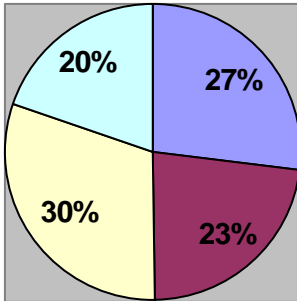


And four of the most severe and common Emergency Medical calls are; Cardiac (heart related), Respiratory (breathing related), Medical (illness) and Trauma (physical Injury). The chart below shows the LWFD response to these types of incidents over the past three years.

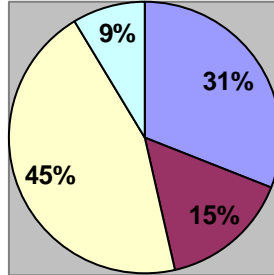


LWFD Incident Type Trends

2006 Fire Incident Groups

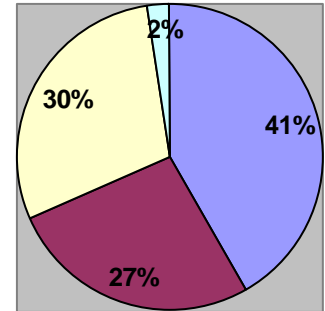


2007 Fire Incident Groups

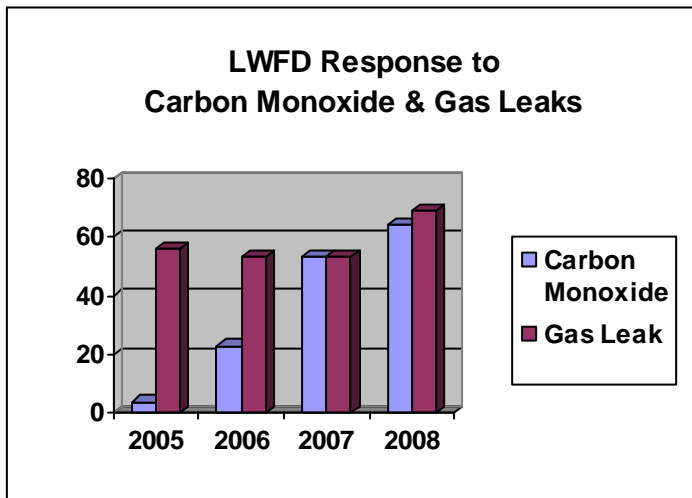


■ Structure
■ Vehicle
■ Outside/Brush
■ Other

2008 Fire Incident Groups



The National Fire Protection Association (NFPA) loosely categorizes fires into four areas. They are: Structure Fires, Vehicle Fire, Brush or Wildland Fires and Other Fires. As you can see these categories within the LWFD vary from year to year. A positive trend, however, is the decline in the "Other" category. This is directly related to better and more consistent reporting by our fire officers.



With the increase in the number and effectiveness of Carbon Monoxide (CO) detectors, the LWFD has seen a marked increase in the frequency of CO calls over the past four years. Because CO is odorless, CO leaks had often gone undetected or misidentified. Gas leaks, on the other hand, are usually obvious because of the distinct odor added to it during production.

Commercial Gas Leak with Fire



The Stations

Headquarters and Station One
1005 School St., Downtown Lisle

Engine 511, Truck 517, Medic 510



Station Two
7393 Woodridge Drive

Engine 521, Medic 520



Station Three
3101 Woodridge Drive

Truck 537, Medic 530



Station Four
2505 Green Trails Drive

Engine 541



Station Five
2005 Warrenville Road

Engine 551, Medic 550



Building Six (Maintenance Shop)
2001 Warrenville Road



The Cost of Your Fire Protection and Emergency Medical Services

The Lisle-Woodridge Fire Protection District (LWFD) provides the people it serves with much more than just Fire Suppression. The three primary divisions within the LWFD are; the Bureau of Emergency Medical Services (EMS), the Bureau of Fire Prevention (FPB) and the Bureau of Training. Each is headed by a Bureau Chief.

The Bureau of EMS, which oversees more than 60 firefighter/paramedics and 40 Emergency Medical Technicians (EMT) along with four full time ambulances, conducts monthly continuing education in advanced (EMT/Paramedic) and basic (EMT) life support to all members of the District. EMS also funnels input from its medics through committees and potentially effects pre-hospital *and hospital* treatment on a state-wide scale.

The Fire Prevention Bureau (FPB) conducts plan reviews and code enforcement to minimize the chance of a fire and to make any fire that does occur do much less damage. The FPB also provides Public Education to many groups on many different levels, from elementary school to senior living, and from installing smoke and carbon monoxide (CO) detectors to conducting fire extinguisher training as well as life safety preparedness for local organizations and businesses. The FPB also coordinates arson and fire investigations.

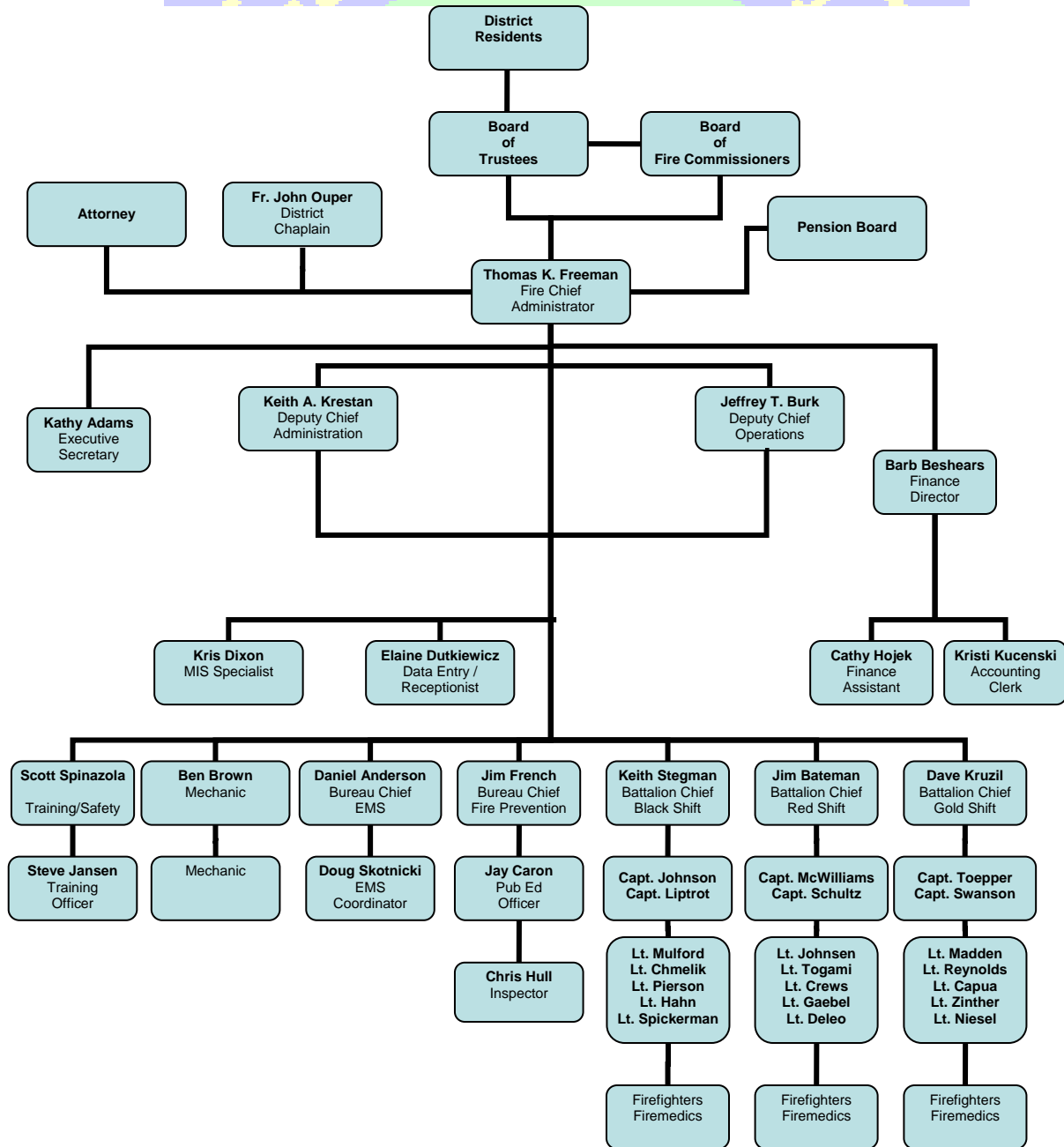
The Training Bureau teaches classes to firefighters from the entire area in subjects such as specialized rescue in numerous disciplines, hazardous materials response, underwater rescue and recovery and firefighter wellness, as well as teaching cutting edge techniques in fire suppression, vehicle extrication and numerous other subject areas.

The LWFD has received a Class One certification from the Insurance Services Office (ISO). It was the first time a fire district had ever received this grade, which is the highest possible score. The ISO grade is the most commonly used determinant in assigning fire insurance rates throughout the country.

The cost for these vital services to the average homeowner is about \$465.00 per year. Or just over a buck and a quarter a day. That's pretty cheap insurance considering the fact that the LWFD will provide you with Advanced Life support and ISO 1 personnel, equipment and fire suppression vehicles to your door in an average of five minutes from your call for help.

Lisle Woodridge Fire District

Organizational Chart



The Personnel

	Shift One (Black)	Shift Two (Red)	Shift Three (Gold)
Battalion Chief	Keith Stegman	Jim Bateman	Dave Kruzil
Captain	Mark Liptrot Jeff Johnson	Jay Caron Tom Schultz	Jeff Toepper Ken Swanson
Lieutenant	Doug Mulford Rudy Chmelik Bob Spickerman Larry Hahn Jeff Pierson	Dave Johnson Kevin Togami Geoff Gaebel Carl DeLeo Ed Crews	Terry Madden Pat Reynolds Tim Capua Dave Zinther Jim Niesel
Firefighter 1	Jim Slater Steve Watkins John Moll Chris Bradley Paul Sherrod Luke Peterson Annette Zapp Jake Saylor Brian Fitzgerald Carl Trippett Kevin Geldean Bob Haltom Joe Barnes Chris Murphy Scott Rubo Jim Kensel Kent Farris Joe Malczyk Joe Pawlisz Wade Portner Tim Thome Eric Tomaskovic Vic Jakobsons	Scott Gray Rodney Homerding Tim Griffen Jon Call Matt Schebo Larry Munch Mike Egan John Kleronomos Kirk Barry Glenn Brown Karl Sitarz Tony James Dan DeCreane Marty Thompson Cliff May Jim Floback Jason Simon Andy Detolve Doug Campbell Dave Kowalski Tony Langford Karl Schmidt Randy Miller	Fred Mitchell Dave Fazio Steve Mast Jay Richardson James Weaver Mike Grosche Bill Kelly Karl Fitzloff Kevin Sievert Coleman Ranahan Lee Schoenhofen Steve Demas Ed White Bob Till Joe Lissman Jim Little Brian Sleigher Tim Broniewicz Kevin Crean Jim Haefner Andy Orth Mitch Czech Pete Olson
Firefighter 2	Becky Brenn Joe Plencner Neil Berkowitz Josh Turen	Austin Gieser Scott Wezalis James Loehman Josh Meseth	Eric Fitzpatrick Brian Huegel Mike Rohlicek Nick Croucher
Shift Total	35	35	35

2008 Hirings, Promotions and Retirements

The year 2008 brought many changes to the LWFD. New faces coming in the door and experienced faces going out. Firefighter/Paramedic 1st Class Bobby Reid left for employment as a firefighter in his home town. FM1 Reid had been with the District since March, 2004 and was promoted to 1st Class in April, 2007. Captain Kurt Kuhlmann, Captain Ken McAfee and Deputy Chief Terry Vavra all retired from the District, taking over 90 years of experience with them. Deputy Chief Vavra moved on to become the Fire Chief of Buffalo Grove, Illinois in April of 2008.

Personnel promoted in 2008 were Fire/Medic 1st Class Chris Murphy (5 yrs.) and Fire/Medic 1st Class Marty Thompson (4 yrs.) in July and Fire/Medic 1st Class Scott Rubo (4 yrs.) in September, 2008. Lieutenant Bob Spickerman (15 yrs.) and Lieutenant Tim Capua (19 yrs.) were promoted in February and Lieutenant Steve Jansen (20 yrs.) and Lieutenant Geoff Gaebel (11 yrs.) were promoted in October, 2008. In addition, Emergency Medical Services Bureau Chief Dan Anderson (11 yrs.) was promoted to the commissioned rank of Lieutenant in October. Captain Jeff Johnson (18 yrs.) and Captain Ken Swanson (26 yrs.) were promoted in February, while Captain Jay Caron (21 yrs.) and Captain Dave (Diz) McWilliams (30 yrs.) were promoted in October, 2008. Battalion Chief Keith Stegman (19 yrs.) and Deputy Chief Jeff Burk (29 yrs.) were promoted in October as well.

We proudly report that three new firefighters were added to the ranks in 2008. F/M James Loehman was brought on board in February of 2008, while F/M Josh Meseth and F/M Niel Berkowitz were hired in October.

All of the personnel of the Lisle Woodridge Fire District would like to wish all of the people above Good Luck in the paths they have chosen to follow. To those that have left; We will miss you. And to those who have joined us;

Welcome!

9/11 Remembrance Ceremony



Black Shift

Leadership, continuous improvement, and change are the best words to describe Black shift for 2008. The members of Black shift have demonstrated leadership by helping the specialty teams and the District improve. MABAS 16 Dive team Coordinator Lt. Rudy Chmelik and F/M1 Brian Fitzgerald have been active at the State level to develop standards and Standard Operating Guidelines for water rescue. Both of these individuals teach this critical function to other District members and instruct classes held outside the District. The District Honor Guard, led by F/F 1 Victor Jakobsons, has represented the District at numerous events throughout the year both in District and externally. They have received much praise and continue to grow as a team.

Member skill levels continue to be practiced, challenged, and improve. An opportunity to show me what they were capable of came on my first shift as Black Shift Battalion Chief as we ran numerous live fire multiple company drills in an acquired structure. That day, and other days since, I learned that Black Shift members have a cooperative spirit and understand the vital importance of keeping our skills sharp. Other skills were practiced and new ones acquired as Black shift TRT members participated in MABAS Division 16 and CART validation. Again F/M1 Brian Fitzgerald demonstrated leadership by acting as an evaluator/instructor for the process. Black Shift member F/M 1 Luke Peterson serves as the District fitness coordinator and helps others to improve their fitness levels through his efforts. Many Black shift members began their efforts to reach the next level of their career by partaking in Fire Officer classes and preparing for the 2009 promotional process.

Probably the biggest change to affect Black Shift in 2008 was the promotion of Battalion Chief Burk to Deputy Chief and Captain Keith Stegman to Battalion Chief. Also coming to Black shift in 2008 was Captain Jeff Johnson who comes to our shift with a great deal of experience and enthusiasm for teaching various disciplines including technical rescue and firefighting. Most of this movement was precipitated by the retirement of Captain Ken McAfee whose long time steady leadership will be missed. Already making a good impression on our shift with his positive attitude and work ethic is our newest member F/M 2 Neil Berkowitz.

Black Shift (Cont.)

There will be many challenges and opportunities in 2009 that I am positive Black shift will prepare for and meet with the positive enthusiasm that I have come to expect. I am impressed with the spirit of Black Shift members to give to others. This is evident when members like F/M1 Chris Murphy organize charity softball tournaments or Walk for Life events and F/F1 Carl Trippett collects donations for the Coach House or when all of Black Shift donated grocery store gift cards that were given to us to Coach House. As a newcomer to Black Shift early on I discussed the meaning of the credo symbolized on the Black Shift Flag; Duty, Pride, Tradition. It is evident that this is what to expect from Black Shift. We will be accountable to that credo. Our **Duty** is protect others and each other, we take **Pride** in our abilities, and we honor our **Tradition** of service.

Submitted by BC Keith Stegman

Red Shift

Red Shift saw a lot of changes during 2008. We lost and we gained people through retirements, promotions and transfers. We train on a daily basis and continued to strive to provide the best service we can for the people who live in or travel through our District.

In February we said goodbye to Captain Kurt Kuhlmann. Kurt retired after more than 30 years of service with the District and we wish him the best. We also lost Lt Jeff Johnson, Lt Ken Swanson, FF1 Bob Spickerman and FF1 Tim Capua to promotions. We gained a few new members to the shift with the transfers of Capt. Tom Schultz, Lt. Dave Johnsen and Lt. Jim Niesel, F/M Jim Loehman was hired to fill the vacancy.

In October, we went through some more personnel changes with the promotion of Cap Keith Stegman, and the transfer of Lt Jim Niesel. We welcomed Capt Dave "Diz" McWilliams and Lt Geoff Gaebel to the Shift and Josh Meseth was hired.

With all the movement of personnel during the year, training became even a higher priority. Everyone worked hard and become comfortable with each other and we trained our new probies (probationary firefighters) to the level of skill we expect from our firefighters. The Specialty Team training was almost a constant in '08. With Haz Mat, Dive and Technical Rescue training with MABAS, CART and USAR , it was often a juggling effort to get the specialty team members to where they needed to be at the time they needed to be there. We continue to have a great relationship with our neighboring departments and this type of training reinforces those relations.

All the hard work and training sure pays off when these firefighters are called to emergency incidents. It is truly a joy to watch these professionals work. I had numerous opportunities to watch them in '08 and I am proud of the work they accomplished.

2009 appears to be full of challenges that I'm sure we will meet head-on and be as successful as we have been in the past.

Submitted by BC Jim Bateman

Gold Shift

Once again it has been a privilege to lead and support the members of this great shift. In May of 2005, I was assigned the position of Battalion Chief and began my work with Gold Shift in January, 2006. We all have learned a great deal from each other since that time and in 2008 we continued to challenge ourselves and meet the expectations of the Fire District and the community we serve.

Our members remain active in all levels of the fire service including the specialty teams, with emphasis in training and education. Our goals that we had identified and established consisted of officer training and development for our First Class Firefighter/Firemedics as well as out of rank mentoring for our company officers.

We placed a priority on Pre-incident building surveys also known as Quick Access Preplans which included a higher level of learning and understanding concerning Target Hazards throughout our fire district. We also participated in National Incident Management and Incident Command Training and continue to apply the systematic strategic and tactical approach to all of our incidents.

Our two newest members, Firemedic's Brian Huegel and Eric Fitzpatrick came to Gold Shift in late 2007 and have performed very well during their probationary year. In February we bid goodbye to Lieutenant David Johnson and Captain Tom Schultz who were transferred to Red Shift.

We also witnessed the promotions of Firefighter's Jim Niesel, Tim Capua, Steve Jansen and Geoff Gaebel to Lieutenant and the promotion of Lieutenant Dave McWilliams to Captain. We also welcomed newly promoted Captain Ken Swanson and Lieutenant Jim Niesel to our shift.

We are all very fortunate to have the best that the fire service has to offer us on Gold Shift and would be remiss not to acknowledge all the members who come to work everyday with the number one goal to be ready to respond and meet all of the expectations our community depends on during these ever changing times.

As we look ahead to the challenges before us we will continue to be supportive and strive for excellence. We will continue to maintain a good solid relationship with everyone we work with and for those who we serve and protect.

Submitted by BC Dave Kruzil



Fire Prevention Bureau



The Fire Prevention Bureau provided the citizens, businesses and people from within and outside of our community with premier fire prevention and life safety activities once again in 2008. Through code enforcement and plan review processes, the division concertedly assisted the local businesses with more than 4,600 inspections while reviewing and commenting on over 360 proposed construction submittals and evacuation plans. In addition, there were 27 comprehensive fire investigations performed by Certified Fire Investigators.

The Fire Prevention Public Education portion of the division, in conjunction with our shift personnel, made contact with an estimated 35,600 people in 2008 while conducting and participating in fire drills, presentations and special events. Implementation of the "Remembering When" program for seniors was initiated and created a vital mechanism for the division to install smoke detectors and perform residential inspections for more than 80 seniors. Utilization of the aforementioned activities as educational opportunities for fire and life safety were essential as the fire district continues to strive toward an educated fire and injury free community.

These activities are made possible by the collaborative efforts set forth by the Administration through the Bureau Chief, Public Education Officer, the Full-Time Inspector, the five Part-Time Inspectors, the Administrative Secretary and the Senior Volunteers with the assistance of Shift Personnel.

In 2009 the Fire Prevention Bureau will continue to support the citizens, local businesses, administration and our shift personnel through proactive prevention programs. The recently adopted Life Safety Code in Lisle will provide the division with additional opportunities through a program that requires installation of fire alarm systems in all multi-family buildings providing more contact with residents.

Should you have a fire prevention need, please contact us at (630) 353-3030.

Submitted by BC Jim French, Fire Prevention Bureau



Division of Training & Safety



The Division of Training and Safety is comprised of 2 full time personnel that are responsible for training all members of the Lisle-Woodridge Fire District. 2008 brought another year of mandatory fire suppression training including the topics of driver operator training, self contained breathing apparatus training, live fire training, right to know, water systems, preplans, and the list goes on. Along with the mandatory fire suppression training many members of the Fire District are required to keep up a high level of proficiency in areas such as hazardous materials, technical rescue, and underwater rescue and recovery. The members of the hazardous materials and technical rescue teams were called upon for a validation and deployment drill that was hosted at the Illinois Fire Service Institute in Champaign. The deployment was a multi-day event that tested each team and individual under hazardous conditions on the very skills they train on each and every shift.

In 2008 the training divisions from Lisle-Woodridge Fire District, Downers Grove Fire Department and Naperville Fire Department joined together to provide monthly combined training in the disciplines of fire suppression, technical rescue, hazardous materials, and underwater rescue and recovery. This schedule provides an opportunity for the three Departments that make up MABAS Division 16 to train together on a regular monthly schedule. This opportunity to train together has allowed each member of MABAS 16 have a better operational understanding of each department's standard operating guidelines, communication procedures and policies. Each department contributed their manpower and equipment to the combined training sessions.

The Training and Safety Division also assisted many members of the Lisle-Woodridge Fire District with their individual educational efforts. Many members of the District attended classes hosted by the Illinois Fire Chiefs Educational Foundation. The Lisle-Woodridge Fire District has 70 members certified to the level of Fire Officer I, 42 Fire Officer II and 7 Fire Officer III. Four members attended classes that were hosted at the National Fire Academy in Emmetsburg, Maryland. Education and training was a very important component to the members of the Lisle-Woodridge Fire District and will continue to be in the future.

The Training and Safety Division for the Lisle-Woodridge Fire District will continue to strive for excellence in education and training in 2009. But most importantly we continue to advocate for the safety, health and welfare of each and every member of the Lisle-Woodridge Fire District.

Submitted by BC Scott Spinazola, Bureau Chief of Training

Training for the Real Thing



Automobile Extrication Training



Management Information Systems

The LWFD Information Technology network includes 12 Windows-based servers, 51 desktop and notebook workstations, and 17 mobile data terminals (MDT's) in all response vehicles. The outlying stations are connected to the servers at Stations 1 and 2 by fiber through the Lisle I-Net Consortium. Wireless access is provided in the stations to allow connectivity to the MDT computers.

Highlights in IT for 2008 included:

- Addition of one server to house all EMS programs and data. Updated versions of the EMS patient care reporting and billing programs were deployed. The new server allows the EMS programs to run more efficiently and allows enough data storage that the patient care reporting process is nearly paperless.
- Began the rollout of the CAD Monitor interface between LWFD and DuPage Communications (DuComm). Dispatch data (i.e., address, vehicle numbers, and dispatch times) is collected directly from DuComm's system and is automatically populated in the Firehouse database. This reduces the number of phone calls fire crews need to make to DuComm to find out their call times, as well as the amount of data entry time required to complete fire reports.
- Updated occupancy contact data is now being populated from Firehouse to the MDT's. New and updated site pre-plans are being added to the MDT's on a regular basis also.
- The 4 year equipment rotation plan was continued. 2008 was a fairly "heavy" year for replacement of obsolete equipment. 13 desktop workstations and 3 notebook computers were replaced.
- Routine technical support for fire and administrative personnel was provided by phone, e-mail, and on-site work.

It is anticipated that 2009 will also be a busy year with the planned upgrade of file server hardware, continued workstation rotation, and continued expansion of the capabilities of the MDT computers.

Submitted by MIS Specialist Kris Dixon

Grant Acquisitions

In 2008, grants to further progress with the mission and scope of the Lisle-Woodridge Fire District saw the following in grant work:

- Successfully added \$35,000 in Chemical Meters to the District for hazardous material/chemical identification and notification. No match required.
- Assisted with the successful completion of the purchase of new turnout gear for 80% of department members, enhancing safety of the operations of the District on emergency scenes. Total project cost was \$141,864, with \$113,491 provided from the Federal Government through the Assistance to Firefighters Grant in 2007.

Future intentions for 2009 include:

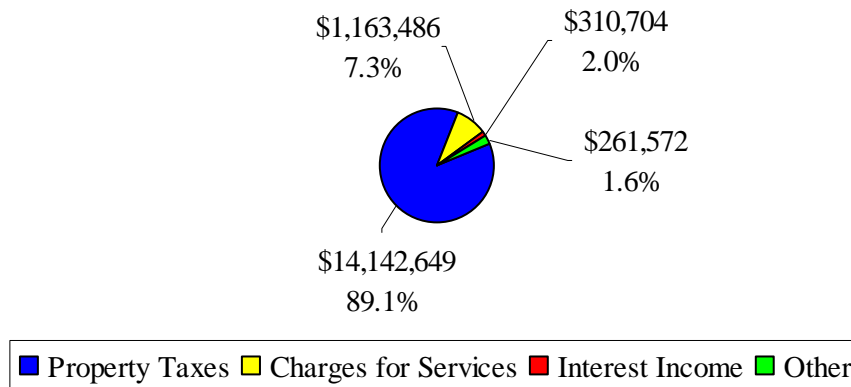
- Awaiting announcement for grant application process for 2009 Assistance to Firefighters Grant.
- Awaiting response from application from the State of Illinois for application submittal for Low Interest Fire Truck Loan Program.
- Analyzing grant announcements for no recipient match grant programs from multiple resources.

Submitted by F/M1 Tim Broniewicz

Finance

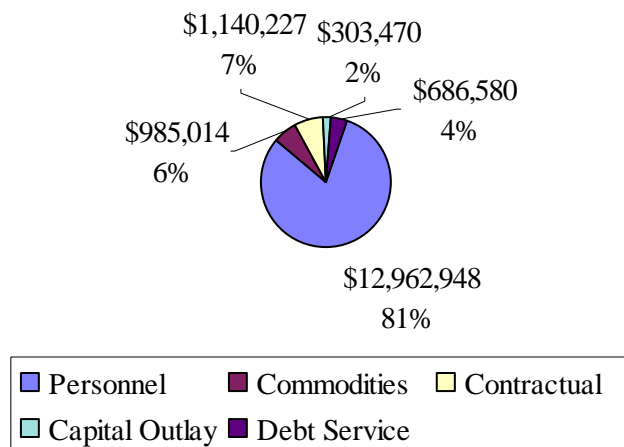
The Fire District operates on a calendar fiscal year – January 1 through December 31. The charts below reflect the revenues and expenditures for the 2008 fiscal year. The majority of the District's revenues come from local sources, such as property taxes, while personnel costs make up the largest portion of the expenditures.

Revenue by Source



Personnel costs include salaries, overtime, benefits and training. Commodities are operational expenditures such as utilities, supplies, and repairs and maintenance of equipment and vehicles. Contractual expenditures include workers compensation insurance, dispatching costs and other professional services, while capital outlay includes equipment costs.

Expenditures by Type



Submitted by Barbara Beshears, LWFD Finance Director

Underwater Rescue and Recovery

The Lisle – Woodridge Underwater Rescue and Recovery Team (URRT) currently consists of 18 highly trained divers. There were no water incidents in 2008 however there have been many changes in training and response. The URRT has been progressively changing over the years and has evolved into a fully qualified water operations team encompassing not just dive but surface, swift-water and ice rescue as well. Through the Mutual Aid Box Alarm System (MABAS) we have combined our response and training with Naperville's Water Rescue Team with support from Downers Grove F.D. Although we will maintain our identity as the LWFD URRT we will train and respond with Division 16 on all water related emergencies. We will continue to train and respond with Division 12 which will expose our members to more training and more potential incidents. The team coordinator is currently a committee member for MABAS Water Operations, and is the technology advisor for MABAS division 12 and also the water rescue coordinator for MABAS division 16. The team members have hosted multiple classes including: Open Water Diver Certification and Rope Operations. The team also leads the area in compliance with the new OFSM requirements and co-wrote the Division 16 SOG's. Several members led Division 12 to a very impressive 3rd place finish at the Lynwood Dive Challenge. We will remain progressive in 2009 and hope to accomplish several objectives including: hosting drills in MABAS 12 and 16 and holding a water operations class and an open water diver class to augment our roster.

Submitted by Lt. Rudy Chmelik, URRT Coordinator

Lisle Woodridge Firefighters Honor Guard

The Lisle Woodridge Fire District Honor Guard is the Districts ceremonial unit, whose primary function it is to provide honor, to cherish, to remember, and to support fallen firefighters and their families, in the event of a line of duty death. Additionally, the Honor Guard provides a ceremonial function for the Fire District supporting events with the District, such as Memorial Day, Independence Day and Veterans Day remembrances. We also participate in District events such as promotional and awards ceremonies, retirements, flag presentations, the annual Silent Parade and other functions involving the presentation of our nation's colors in local civic events.

The Lisle Woodridge Honor Guard also has a Pipes & Drums corps, wherein Honor Guard members provide additional ceremonial support to the primary Honor Guard function. After meeting the Associated Fire Fighters of Illinois ("AFFI") requirements, all members of the Lisle-Woodridge Fire District Honor Guard are eligible to become members of the state wide AFFI Honor Guard. Members are on call for activations throughout the State of Illinois in the tragic case of a line of duty death of an AFFI member. The Lisle-Woodridge Honor Guard also participates annually at the International Association of Firefighters Fallen Firefighters memorial service in Colorado Springs, CO. All members that participate in Colorado Springs are designated IAFF Honor Guard members.

The Lisle Woodridge Honor Guard provides its own training, as well as receiving formal training at the annual AFFI Honor Guard Convention. The Pipes & Drums unit also trains on a regular basis with the District, and works closely with other Fire Department units and Pipes & Drums groups in the area, to continually provide advanced ceremonial support to the fire department and local civic functions

Submitted by F/F1 Victor J. Jakobsons, Honor Guard Commander

Wellness/Fitness

2008 was a great building year for the wellness/fitness program. The year started with the district adopting the new IAFF Wellness/ Fitness Initiative. This new initiative provided a very positive influence on the Lisle-Woodridge wellness/fitness program by making it mandatory that every member of the district workout while on shift. I am confident that this will prove to be a very beneficial step in preventing injuries and ensuring that our members stay fit and healthy.

Our working relationship with Benedictine University also grew significantly in 2008. The Benedictine University students performed a body composition test on every firefighter. This test allows each individual to examine there own body and determine what areas of there body they need to focus on in a fitness program. The body composition test will also be a great baseline for individuals to reference to determine if a fitness program is providing the results they desire. Benedictine University also conducted 18 VO2 max tests on members of the district. This test calculates how efficiently an individual's body utilizes oxygen and can be beneficial when designing a customized fitness program.

Finally, we made a few equipment purchases in 2008. With the assistance of the IPRF grant we were able to furnish station 4 and station 3 with Woodway treadmills. We also purchased an elliptical trainer for station 1 and a step mill for station 3.

Submitted by F/M1 Luke Peterson, Wellness Coordinator

TECHNICAL RESCUE

The Technical Rescue Team (TRT) was formed in January 1991, to safely and successfully mitigate rescues involving special emergency situations. These situations include rescues from above or below grade, confined spaces, trenches and structural collapses. The Team addresses the District's need for specialized skills and equipment necessary to confront the challenges presented by these types of rescues.

The Lisle - Woodridge TRT is a member of C.A.R.T. (Combined Agency Response Team) and MABAS (Mutual Aid Box Alarm System) 16 Technical Rescue Teams. C.A.R.T. consists of approximately sixty-five fire departments that share resources of technical rescue personnel and equipment. CART "Silver Team" is comprised of Darien-Woodridge, Downers Grove, Hinsdale, Lemont, Lisle-Woodridge, Romeoville, Tri-State and Westmont Fire Departments / Districts. MABAS 16 is comprised of Downers Grove, Lisle-Woodridge and Naperville.

The Team continued its training schedule covering all four disciplines of technical rescue; Rope, Confined Space, Trench and Structural Collapse Rescue. Each discipline is addressed throughout the year during monthly training sessions held over three shift days. The monthly training included all day, quarterly training scenarios held over three shift days. These scenarios allow the Team to test and hone their skills in a simulated "real life" incident.

CART Silver Team personnel participated and successfully passed the annual Operations Level Validation. The Validation process consists of a 100 question written exam, an individual skill assessment and a randomly selected rescue scenario. The scenario tests the ability of the Team to create a working management system and coordinate tasks to effectively perform a rescue.

MABAS 16 personnel participated in a State-wide validation at the Illinois Fire Service Institute's facility in Champaign, Illinois. A Task Force group was deployed to a simulated incident that tested the skills of all involved. The members performed victim removals from various collapsed structures. Since the structures varied in materials from wood to concrete / masonry, each provided a shoring / stabilization challenge.

Outside training played a role in the increased efficiency and effectiveness of the Team. The Illinois Terrorism Task Force (ITTF) has funded numerous classes that our TRT personnel have attended which allowed them to enhance their individual abilities as technical rescuers.

In 2008 the Technical Rescue Team members were involved in a rescue of a construction worker injured while working on the I88 reconstruction project. The worker was injured in a shored trench, adjacent to the DuPage River that was in an area twenty five feet below the level of the roadway. This rescue required a concerted effort of all the District's resources; Fire Suppression, Emergency Medical and Technical Rescue.

In year 2009 the Team will continue to train on all four disciplines; rope, confined space, trench and structural collapse rescue. Members will be able to continue their education utilizing ITTF grant money, reducing the Teams financial impact on the District and residents. The CART Silver Team will be challenging the Technician Level Validation for the first time. This will ensure a high level of preparedness of the Technical Rescue Team and better protection for those we serve.

Submitted by Lt. Steven Jansen, Technical Rescue Team Coordinator

Single Family Home Fire, October 2008



Fire in a High Rise, August 2008





Single family Home Fire, September 2008

